



SPEC SHEET

KoolMore 35 in. Two-Door Back Bar Refrigerator - 7.4 Cu Ft.

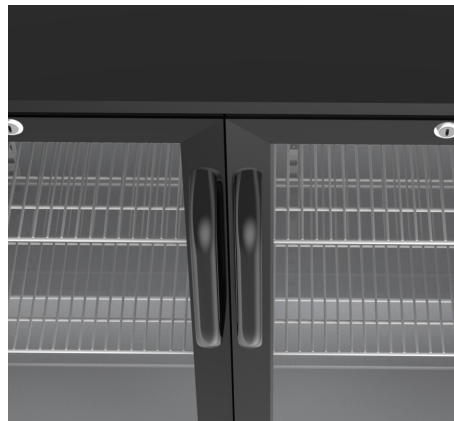
SKU: BC-2DSW-BK

FEATURES

- Digital temperature display and controls.
- Two glass doors to help you keep track of inventory
- LED lighting with an independent switch.
- A spacious interior with four adjustable shelves
- Auto defrost and a self-evaporating water pan.
- Two locks one for each door will keep your products secure.
- Four 1/5-inch adjustable feet for height flexibility
- ETL Listed for Safety and Sanitation



CLOSE UP IMAGES



TECHNICAL SPECS

Dimensions

Depth	35.4
Width	20.4
Height	35.4
Interior Depth	32.3
Interior Width	16.1
Interior Height	30
Minimum Back Air Clearance	3.94
Minimum Side Air Clearance	Not Required
Depth Including Handles	20.47
Depth Excluding Handles	19.69
Depth Less Door	17.72
Depth With Door Open 90 Degrees	30.06
Power Cord Length	110

Capacity

Weight	119
Gross Cubic Feet	20.68
Net Capacity Cu. Ft.	20.5
Individual Shelf Capacity	66 lbs.

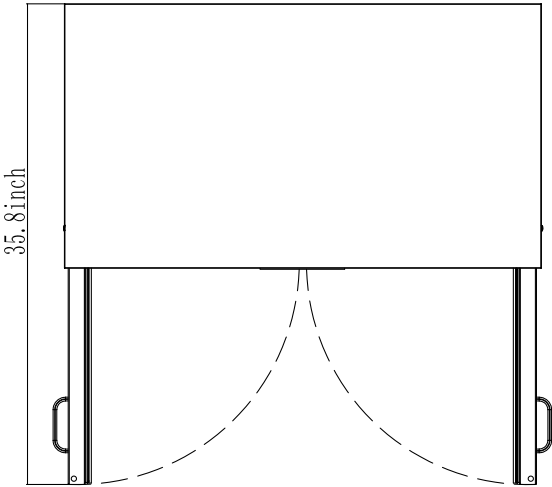
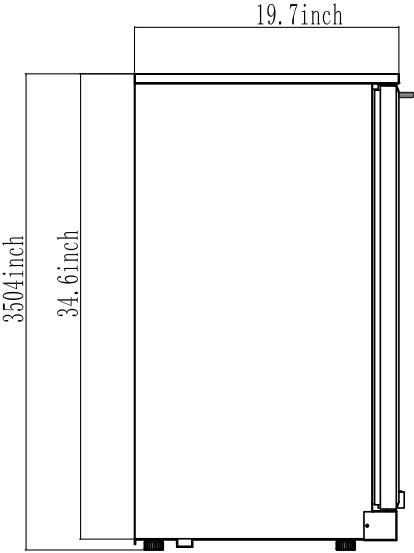
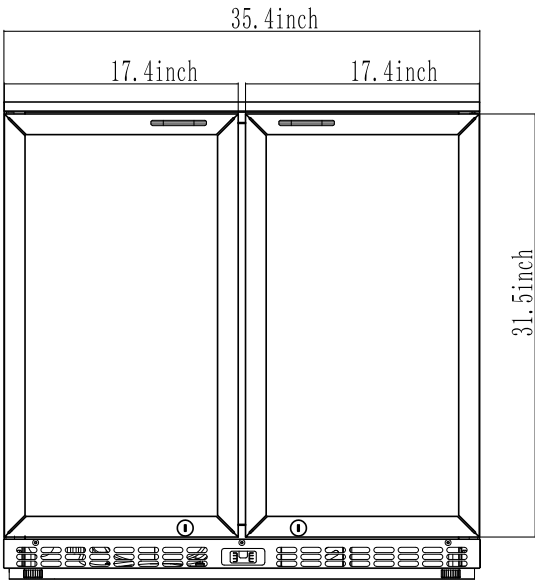
Features & Material

Door Style	Hinged door
Number Of Doors	2
Number Of Shelves	4
Defrost Type	Automatic
Refrigerant Type	R-600a
Temperature Control Type	
Ambient Temperature Range	86 F
Temperature Range	36-46 F
Casters	53 db
Color Finish	Black
Color Door Handles	
Compressor Location	Rear
Exterior Material	Galvanized Steel
Interior Material	Embossed Aluminum
Door Material	Galvanized Steel
Shelf Material Type	Plastic Coated Steel Wire
Interior Lights	Yes
Interior Lights Color	White
Digital Temperature Control	Dixell

Electric Data & Certifications

Amps	1.32
Phase	1
Plug Type	NEMA 5-15P
Voltage	115
Hertz	60
Wattage	151.8
Horsepower	0.09
Certifications	ETL Listed for Safety and Sanitation

Plan View



CERTIFICATIONS

Intertek Intertek



706 Eastern Parkway STE 1G, Brooklyn NY 11213
718-576-6342
info@koolmore.com