



SPEC SHEET

KoolMore 22 in. Commercial Countertop Bakery Display Case with Front Curved Glass and Rear Door, 1.5 cu. ft.

Model: DC-2C

FEATURES

- Increase impulse buys.
- Display in style.
- Space-saving Countertop design
- Built to last.
- Full-Service Case.
- All glass-sided for maximum visibility



CLOSE UP IMAGES



TECHNICAL SPECS

Dimensions

Length	21.8
Width	14.8
Height	14.5
Interior Depth	21.42
Interior Width	14.21
Interior Height	11.97
Weightlbs	26

Capacity

Gross Cubic Feet	1.8
Net Cubic Feet	1.6
Individual Shelf Capacity	11 lbs.

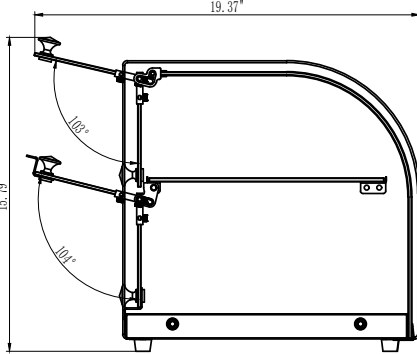
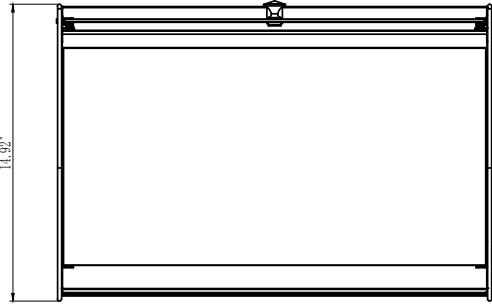
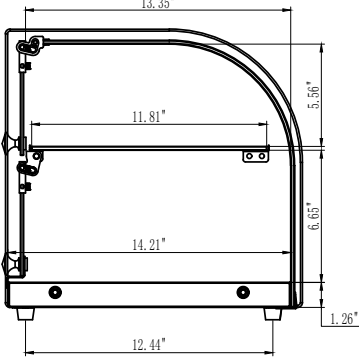
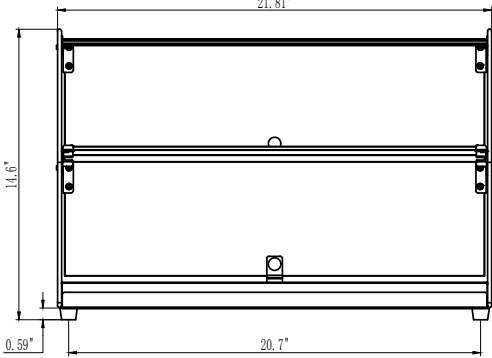
Features & Materials

Door Style	Vertical Swing
Number Of Doors	2
Number Of Shelves	1
Shelf Material Type	Glass
Glass Type	Tempered
Exterior Material	Glass and Sheet Metal
Number Of Feet	4
Feet Material	Rubber
Legs Adjustable	No
Color Finish	Transparent and Stainless-Steel

Certifications

Certifications	ETL Listed for Sanitation
----------------	---------------------------

Plan View



CERTIFICATIONS



Intertek



718-576-6342
info@koolmore.com