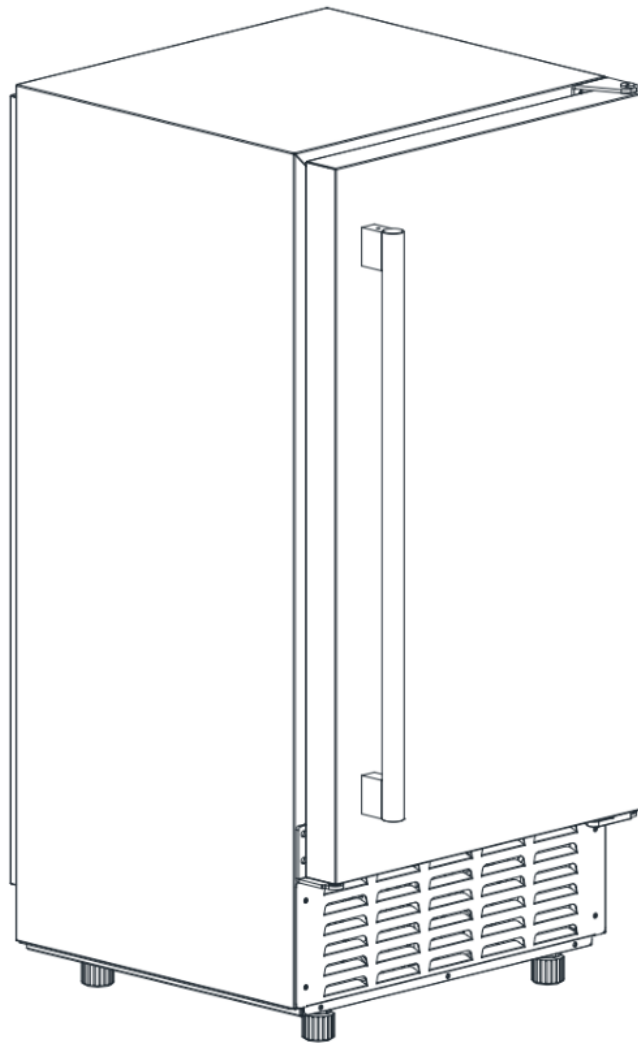




ICE NUGGET MAKER

KoolMore Built-In Residential Pearl Ice Nugget Maker

Models: KM-BIM66-NSS



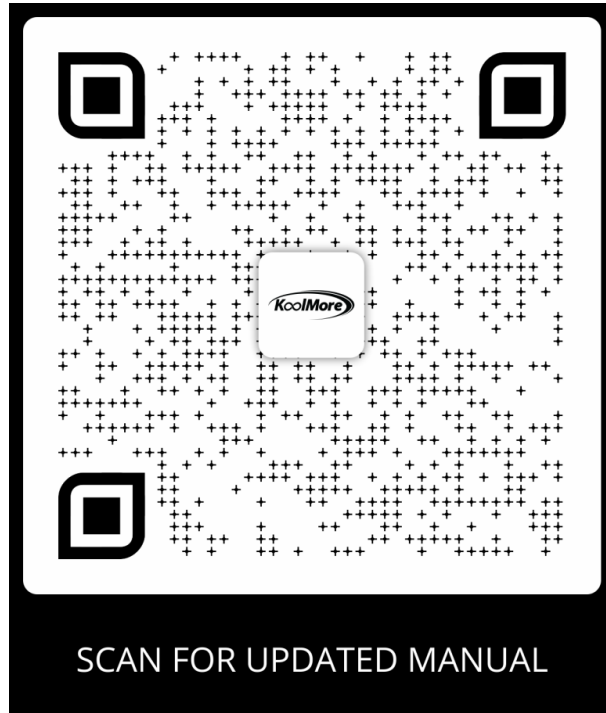
Before using, please read the operating instructions carefully to ensure proper application and achieve satisfactory results.

For any service related issues, please contact us:

☎ 718-576-6342 ✉ support@koolmore.com

Stay informed with the latest information for your KoolMore Appliance.

Scan the QR code below to access the most recent user manual on our website, which is constantly being updated and improved.



If you need any assistance or have questions, our customer support team is here to help.

Phone- 718-576-6342 Email- support@koolmore.com

Please write down the model number and serial number below for future reference. Both numbers are located on the rating label on the back of your unit or inside of the unit and are needed to obtain warranty service. You may also want to staple your receipt to this manual as it is your proof of purchase and may also be needed for service under warranty.

Model Number: _____
Serial Number: _____
Date of Purchase: _____

To better serve you, please do the following before contacting customer service:

If you received a damaged product, immediately contact the retailer or dealer that sold you the product. Read and follow this User Manual carefully to help you install, use, and maintain your unit.

Refer to the Troubleshooting section of this manual as it will help you diagnose and solve many common issues.

Contents

Safety	4
Installation	6
Operation	10
Maintenance	12
Troubleshooting	15
Circuit Diagram	16
Warranty	17

Safety

- When using electrical appliances, basic safety precautions should be followed to reduce the risk of fire, electric shock, and injury to persons or property. Read all instructions before using any appliance.
- Use this appliance only for its intended purpose as described in this owner's manual. This ice-maker must be properly installed in accordance with the installation instructions before it is used.
- This unit must be positioned so that the plug is accessible. Do not run cord over carpeting or other heat insulators. Do not cover the cord. Keep cord away from traffic areas, and do not submerge in water. No other appliance should be plugged into the same outlet, and be sure that the plug is fully inserted into the receptacle.
- We do not recommend the use of extension cords as it may overheat and cause a risk of fire. If you must use an extension cord, use a minimum 18 AWG cord rated for at least 1875 watts.
- If the power cord is damaged, it must be replaced by the manufacturer or its service agent or a similarly qualified person in order to avoid a hazard.
- Always unplug the power cord or disconnect the appliance from the main power supply before cleaning or servicing.

NOTE: If the appliance requires readjustment or reprogramming, the service must be performed by a qualified technician to prevent the risk of electric shock or other potential hazards.

- Never unplug your unit by pulling on the power cord. Always grasp the plug firmly and pull straight out from the outlet.
- Do not use your unit outdoors. Keep the unit away from direct sunlight and make sure that there is at least 6 inches of space between the back of your unit and wall and keep the front clear. Keep ventilation opening in the appliance enclosure or in the built-in structure, clear of obstruction.
- Do not tip the unit over. Doing so may cause excessive noise, irregular ice cube sizes, and potentially lead to water leakage.
- If the unit has been brought indoors from cold outdoor conditions, allow it to sit at room temperature for several hours before plugging it in.
- Use only water to make ice cubes. Do not use any other liquids.
- Do not use flammable fluids to clean the ice maker. Fumes may cause a fire or explosion.

WARNING: This appliance must be grounded. Use the proper power source according to the nameplate.

WARNING: Keep ventilation openings, in the appliance enclosure or in the built-in structure, clear of obstruction.

WARNING: Do not damage the refrigerant circuit.

WARNING: This appliance is not intended for use by persons (including children) with reduced physical, sensory or mental capabilities, or lack of experience and knowledge, unless they have been given supervision or instruction concerning use of the appliance by a person responsible for their safety.

WARNING: Children should be supervised to ensure that they do not play with the appliance.

WARNING: Do not store explosive substances such as aerosol cans with a flammable propellant in this appliance.

DANGER – Risk Of Fire or Explosion. Flammable Refrigerant Used. Do Not Use Mechanical Devices To Defrost Ice Maker. Do Not Puncture Refrigerant Tubing.

CAUTION – Risk Of Fire Or Explosion. Flammable Refrigerant Used. Consult Repair Manual/Owner's Guide Before Attempting To Install or Service This Product. All Safety Precautions Must be Followed.

CAUTION – Risk Of Fire Or Explosion. Dispose of Property in Accordance With Federal and Local Regulations. Flammable Refrigerant Used.

CAUTION – Risk Of Fire Or Explosion Due To Puncture Of Refrigerant Tubing; Follow Handling Instructions Carefully. Flammable Refrigerant Used.

The ice maker should be installed in accordance with the safety standard for Refrigeration Systems, ASHRAE 15. The ice maker shall not be installed in corridors or hallways of public buildings.

If the unit requires maintenance, it must be serviced by factory-authorized personnel using identical replacement components. This ensures proper operation and minimizes the risk of fire or other hazards caused by incorrect parts or improper service.

WARNING: This appliance is intended to be used in household and similar applications such as

- Staff kitchen areas in shops, offices and other working environments.
- Farmhouses and by clients in hotels, motels and other residential type environments.
- Bed and breakfast type environments.
- Catering and similar non-retail applications.

To avoid a hazard due to instability of the appliance, it must be placed at an even or flat surface.

Disposal

When the appliance will no longer be used, dispose of it properly in accordance with local, state, and federal regulations.

Installation

Unpacking Your Ice Maker

Unpack the Unit

Remove all exterior and interior packaging.

Check that all accessories are included, such as:

- Instruction manual
- Ice scoop
- White water inlet pipe
- Water drain pipe
- Quick connector (1/4-inch to 1/2-inch adapter)

If any parts are missing, please contact our customer service department.

Prepare the Unit for Use

- Remove all protective tape from the door, inner cabinet, ice scoop, and other components.
- Wipe the inner cabinet and ice scoop with a damp cloth to clean before first use.

Placement Instructions

- Choose the Right Location
- Place the ice maker on a level, flat surface.
- Keep it away from direct sunlight and heat sources (such as stoves, furnaces, or radiators).
- Maintain 2 inches at the rear and 10 inches in front for ventilation.

Before Use

If the unit may have been tilted or placed upside down during shipping or transport, allow it to sit upright for at least 4 hours before plugging it in after transportation. This gives the refrigerant fluid time to settle.

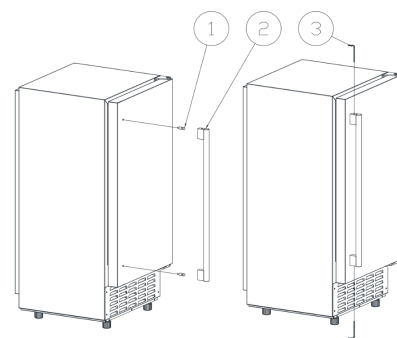
Power Access

Position the appliance so that the power plug remains accessible at all times.

 **WARNING:** Connect only to a potable (drinking) water supply. Use drinking water only.

Handle Installation

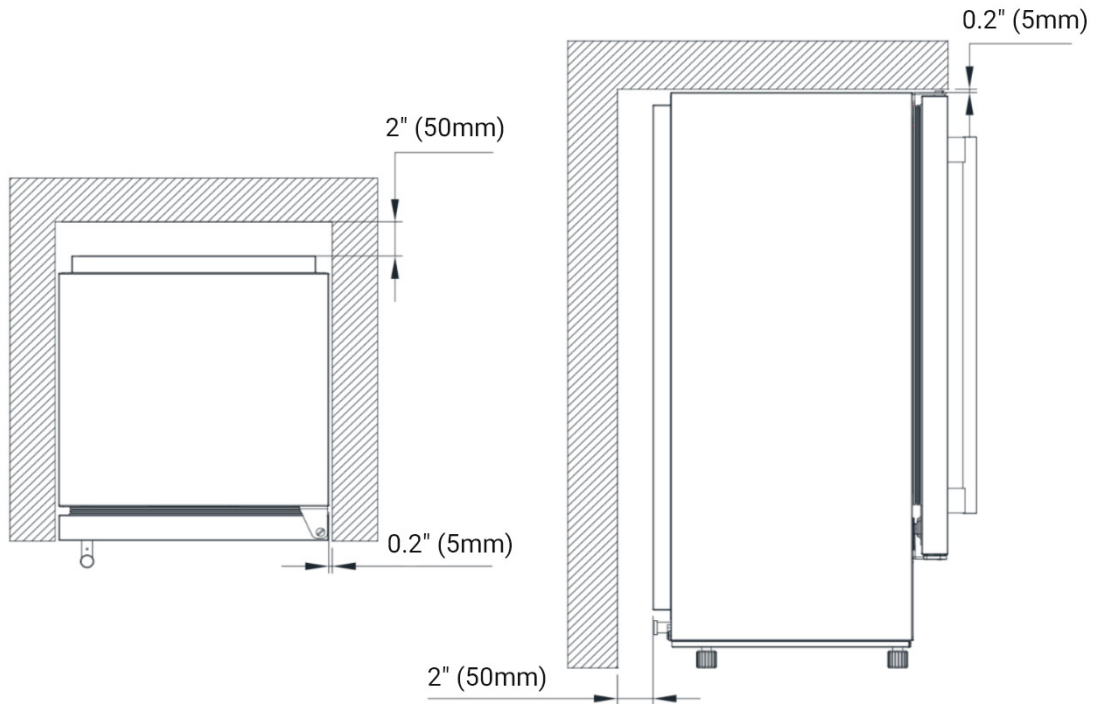
1. Open the accessory package and locate the two screws. Insert each screw into the screw hole and tighten it about halfway.
2. Find the door handle and align it with the screw hole.
3. Find the hexagonal screw and tighten it in the specified position.



Installation Location Requirement

- This unit is not for outdoor use. Keep the proper room temperature and inlet water temperature for optimal performance. This unit should not be located near any heat source.
- The unit should be located on a firm & level foundation.

- There must be at least a 2-inch clearance at rear side for connection and a 10-inch clearance in the front to open the door and keep good air circulation.
- Do not put anything on the top of the ice maker.
- When installing the ice maker under a counter, follow the recommended spacing dimensions shown below. Place electrical and water supplies and drain fixtures in the recommended locations as shown.
- Choose a well-ventilated area with temperatures above 50 °F and below 90 °F. This unit **MUST** be installed in an area protected from the elements, such as wind, rain, water spray, or drips.
- The ice maker requires a continuous water supply with 1-8 bar pressure. The temperature of the water feeding into the ice maker should be between 41°F and 77°F for proper operation.



Electrical Requirement & Connections

WARNING: This Unit Must be Grounded.

- Plug unit into a grounded wall outlet.
- Never remove the ground prong.
- Use separate power supply or receptacle. Never use an adapter.
- Never use an extension cord.
- Failure to follow these instructions can result in death, fire, or electrical shock.

Before you move your ice maker into its final location, it is important to make sure you have the proper electrical connection.

It is recommended that a separate circuit, serving only your ice maker, be provided. Use receptacles that cannot be turned off by a switch or pull chain. If the supply cord or plug needs to be replaced, it should be done by a qualified service engineer.

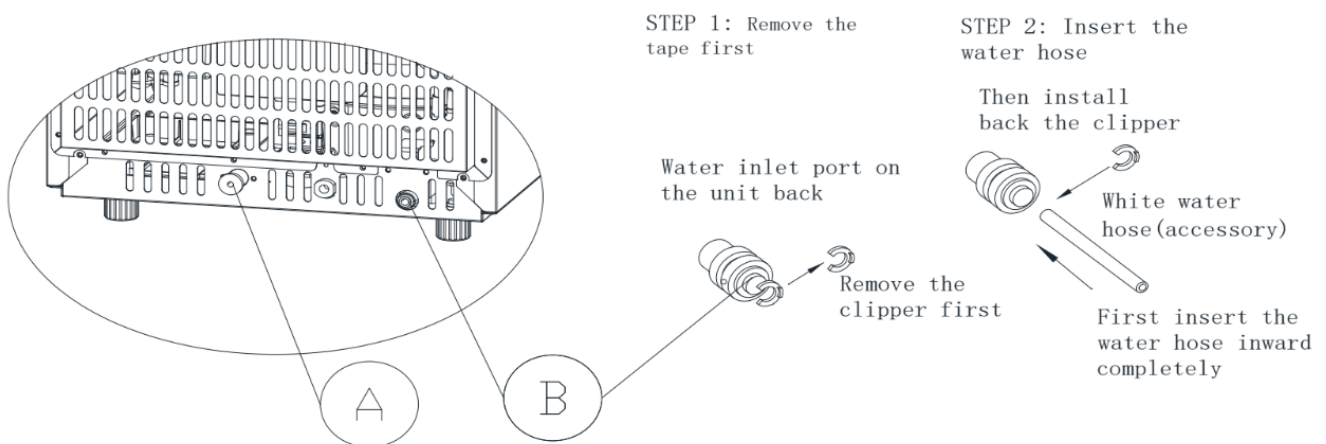
This appliance requires a standard 110-120 V, 60Hz electrical outlet with a properly grounded outlet.

Recommended Grounding Method

For your personal safety, this appliance must be properly grounded. This appliance is equipped with a power supply cord having a grounding plug. To minimize possible shock hazard, the cord must be plugged into a mating grounding-type wall receptacle, grounded in accordance with the National Electrical Code and local codes and ordinances. If a mating wall receptacle is not available, it is the personal responsibility of the customer to have a properly grounded wall receptacle installed by a qualified electrician.

Water Connection For Your Ice Maker

Important: Be sure to use the new hose-sets supplied with the appliance to connect to water mains and that old hose-sets should not be reused.



Connect the water supplying hose to the unit

Step 1: Remove the protective tape from the water inlet port (labeled "B" in the illustration) on the back of the unit. Once the tape is removed, press the outer ring of the water inlet port gently with your finger to release the clip and prepare it for hose installation.

Step 2: Insert one end of the white water hose into the water inlet port. Push it in firmly until it is fully seated, then reinstall the clip to secure the connection. The water connection is now complete.

Connecting the Water Drain Pipe

Remove the black drain cap (labeled "A" in the illustration). Attach the white drain hose included with the accessories to the drain outlet, then connect the other end of the hose securely to your main drainage line.

Connecting the Water Supply Line

Attach the supplied quick connector to the water faucet by tightening it securely onto the faucet threads.

Remove the clip from the quick connector.

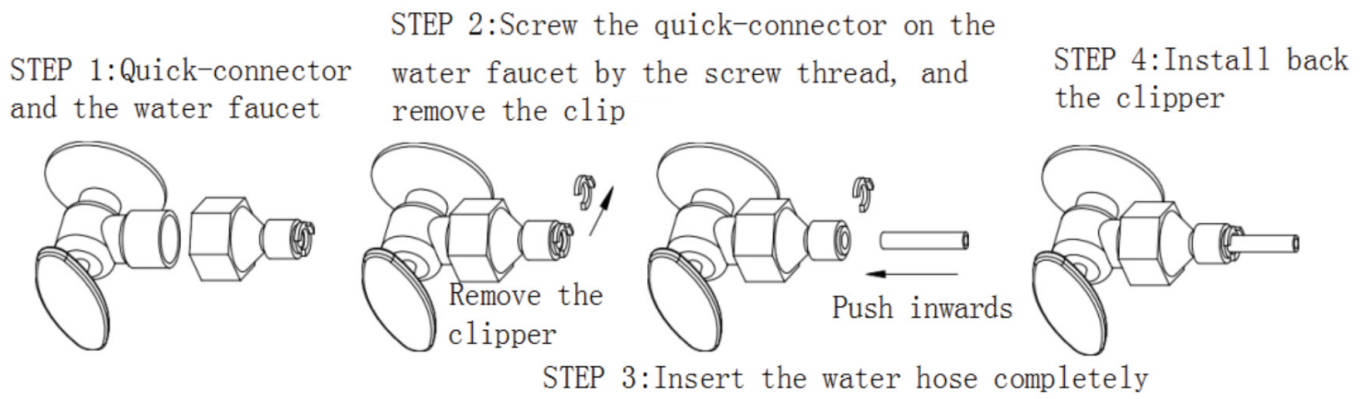
Insert the end of the water hose fully into the connector port.

Reattach the clip to secure the connection.

Once the clip is in place, the installation is complete.

Note: The water faucet should be supplied by the customer.

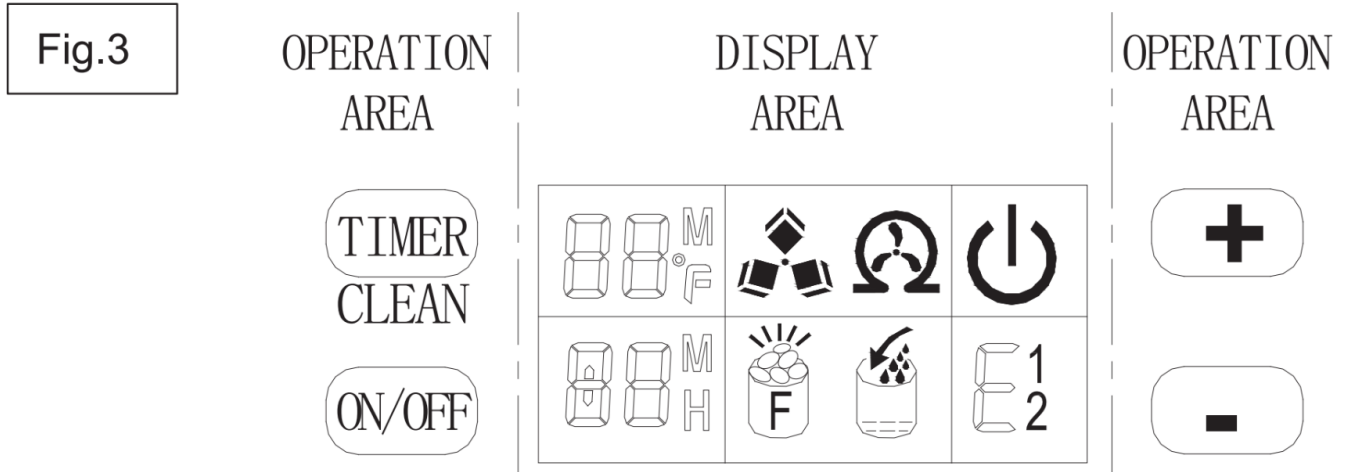
Important: The water pressure of main water supply system must be between 6-87 psi.



Operation

Operating Your Unit



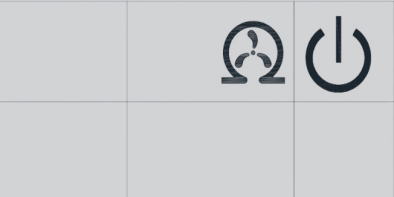

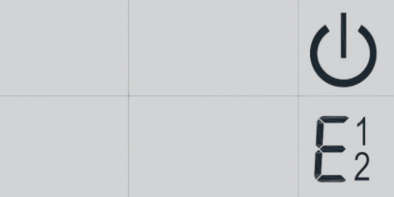
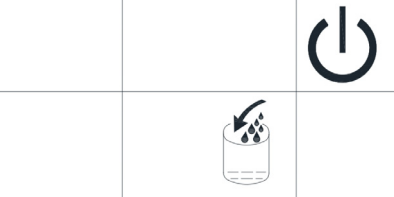

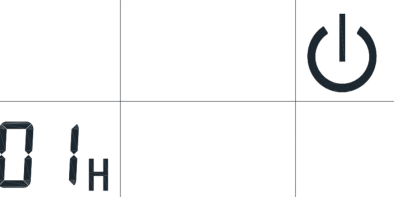
- Operation button and display area diagram



- Operation of Ice Making Process

Timer Cleaner	Quickly press this button once to enter the Timer setting mode; press and hold for more than 5 seconds to enter the Cleaning program.
ON/OFF	When the unit is off, press this button to turn it on. During the Self-Cleaning cycle or normal ice-making operation, pressing this button will immediately turn the unit off. If a timer has been set, pressing this button will cancel the timer setting.
LCD Display Window	Function display panel
"+" "-"	Timer Adjustment

Symbol Description

1	<p>Environmental Temperature Display. Press the “+” button for more than 5 seconds to switch the temperature display between Fahrenheit (°F) and Celsius (°C).</p>	
2	<p>Ice Making and Deicing Symbol Display</p> <ul style="list-style-type: none"> • The machine is making ice when the symbol rotates. • If the symbol flashes, the ice-making process is not functioning properly. 	
3	<p>Automatic Self-Cleaning Symbol Display</p> <ul style="list-style-type: none"> • Press and hold the “TIMER CLEAN” button on the control panel for more than 5 seconds to start the self-cleaning program. • The default cleaning time is 15 minutes. • To cancel the self-cleaning program, press the “ON/OFF” button on the control panel. 	
4	<p>On/off Symbol Display. This symbol indicates the machine’s power status – on or off.</p>	
5	<p>Error Code Display</p> <ul style="list-style-type: none"> • E1: No water detected for an extended period. • E2: The environmental temperature sensor is damaged. • E: The drain pump is not operating correctly. 	
6	<p>Water Inflow and Water Shortage Display</p> <ul style="list-style-type: none"> • A flashing arrow indicates that the machine is adding water. • If the symbol remains solid, it indicates that the machine is low on water. 	
7	<p>Ice Full Alarm</p> <ul style="list-style-type: none"> • When the ice storage bin is full, the symbol will appear. • Remove the ice to allow the machine to resume ice production. • If the symbol remains on and cannot be cleared, press and hold the power button to force the ice-making cycle for 80 minutes. 	
8	<p>Setting the timer (1–24 hours)</p> <ul style="list-style-type: none"> • When the machine is running, you can set it to automatically shut off after a selected number of hours. • When the machine is in standby mode, you can set it to automatically turn on after the chosen time period. 	

Maintenance

Cleaning Tips

WARNING:

Before performing any cleaning or maintenance, unplug the ice maker from the power supply. (Exception: during the self-cleaning program.)

Do not use alcohol, strong fumes, or harsh chemicals to clean or sanitize the ice maker, as these can damage plastic parts.

A qualified service technician should inspect and clean the condenser at least once a year to ensure proper operation.

CAUTION:

If the ice maker has been unused for an extended period, it must be thoroughly cleaned before being put back into service. Follow all instructions for cleaning and sanitizing carefully, and do not leave any cleaning solution inside the ice maker.

Regular cleaning and maintenance help ensure efficient performance, hygiene, and long service life. The suggested intervals assume normal indoor use. If the unit is used outdoors or in areas with pets, more frequent cleaning may be necessary.

What Not to Do

Do not store anything in the ice storage bin other than ice. Items such as wine or beer bottles are unsanitary, and labels or debris may clog the drain.

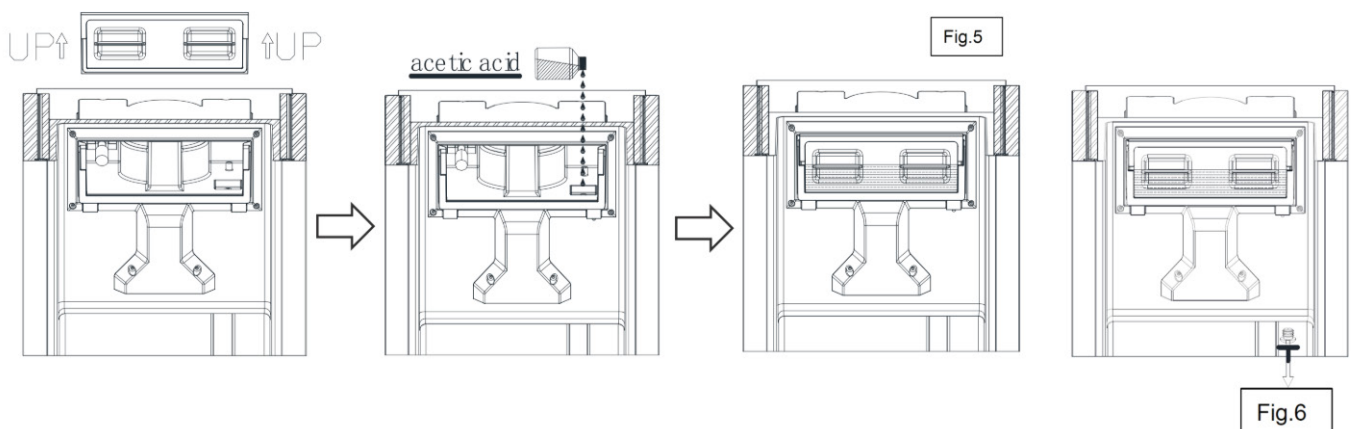
Exterior Cleaning

Clean the door and cabinet with a mild detergent and warm water solution (for example, mix **1 oz of dishwashing liquid with approximately 2 gallons of warm water**). Do not use solvent-based or abrasive cleaners

Use a soft sponge to clean and rinse with fresh water. Wipe dry with a soft towel to prevent water spots.

Stainless Steel Surfaces:

Stainless steel may discolor when exposed to chlorine gas. Clean with a mild detergent and warm water using a soft cloth. Do not use abrasive or chlorine-based cleaners. Some discoloration may occur if the unit is located near swimming pools or spas due to chlorine exposure; this is normal.



Cleaning Procedure

1. Before using your ice maker, it is strongly recommended to clean it thoroughly.
2. Clean all surfaces that come into contact with water.
3. Add an appropriate amount of **acetic acid cleaning solution** to the indicated positions (see Fig.
4. Reinstall the transparent window to prevent water leakage and ensure proper alignment.
5. Press and hold the **CLEANING** button on the control panel for more than 5 seconds to start the cleaning program. The cleaning cycle lasts about 15 minutes.
6. Remove the drain plug (Fig. 6) to drain the cleaning solution from the water tank.
Note: This step helps dissolve and flush out any scale buildup.
7. Reinstall the drain plug securely.
8. Run the cleaning program again for another 15 minutes, then press the POWER button to begin ice making.
9. Discard any ice produced within the first 15 minutes after cleaning.
10. Clean the outside of the unit regularly using a mild detergent and warm water solution.
11. Dry both the interior and exterior with a clean, soft cloth.

Interior Cleaning for the Ice Storage Bin

The ice storage bin should be sanitized periodically, especially before the first use or after a long period of inactivity.

1. Disconnect the power supply.
2. Open the door and wipe the interior with a clean cloth moistened with a sanitizing solution made from 1 oz of household bleach or chlorine mixed with about 2 gallons of hot water (95°F–115°F).
3. Rinse thoroughly with clean water. The wastewater will drain through the drain pipe.
4. Reconnect the power to the unit.

NOTICE:

Wash the ice scoop regularly just like any food-contact item.

WARNING:

Do not use solvent-based cleaners or abrasive materials on the interior surfaces. These may leave residues that affect the taste of the ice or damage the finish.

Cleaning Recommendations

Daily Cleaning

At the end of each day, clean the ice shovel, door, and water-dividing pipe. Rinse the ice shovel and wipe both sides of the door with a clean, soft cloth.

Semi-Monthly Cleaning

Every two weeks, clean the ice shovel, ice bin, water tank, ice-full detecting plate, and evaporator surface following the interior cleaning procedure.

Semi-Annual Cleaning

Every six months, thoroughly clean all components that come into contact with water or ice — including the ice storage bin, water tank, evaporator, water pump, silicone tubing, and water-dividing pipe.

Use **Nu-Calgon Nickel-Safe Ice Machine Cleaner** or an equivalent cleaner. For best results, this cleaning should be performed by a qualified service technician using the unit's built-in system cleaning program.

Normal Sounds

Your new ice maker may make sounds that are not familiar to you. Most of the new sounds are normal. Hard surfaces like the floor, walls and cabinets can make the sounds seem louder than they actually are. The following describes the kinds of sounds that might be new to you and what may be making them.

- You will hear a swooshing sound when the water valve opens to fill the water tank for each cycle.
- Rattling noises may come from the flow of the refrigerant or the water line. Items stored on top of the ice maker can also make noises.
- The high-efficiency compressor may make a pulsating or high-pitched sound.
- Water running from the water tank to the evaporator plate may make a splashing sound.
- Water running from the evaporator to the water tank may make a splashing sound.
- As each cycle ends, you may hear a gurgling sound due to the refrigerant flowing in your ice maker.
- You may hear air being forced over the condenser by the condenser fan. During the harvest cycle, you may hear the sound of ice cubes falling into the ice storage bin.
- When you first start the ice maker, you may hear water running continuously. The ice maker is programmed to run a rinse cycle before it begins to make ice.

Preparing the Ice Maker for Long Storage

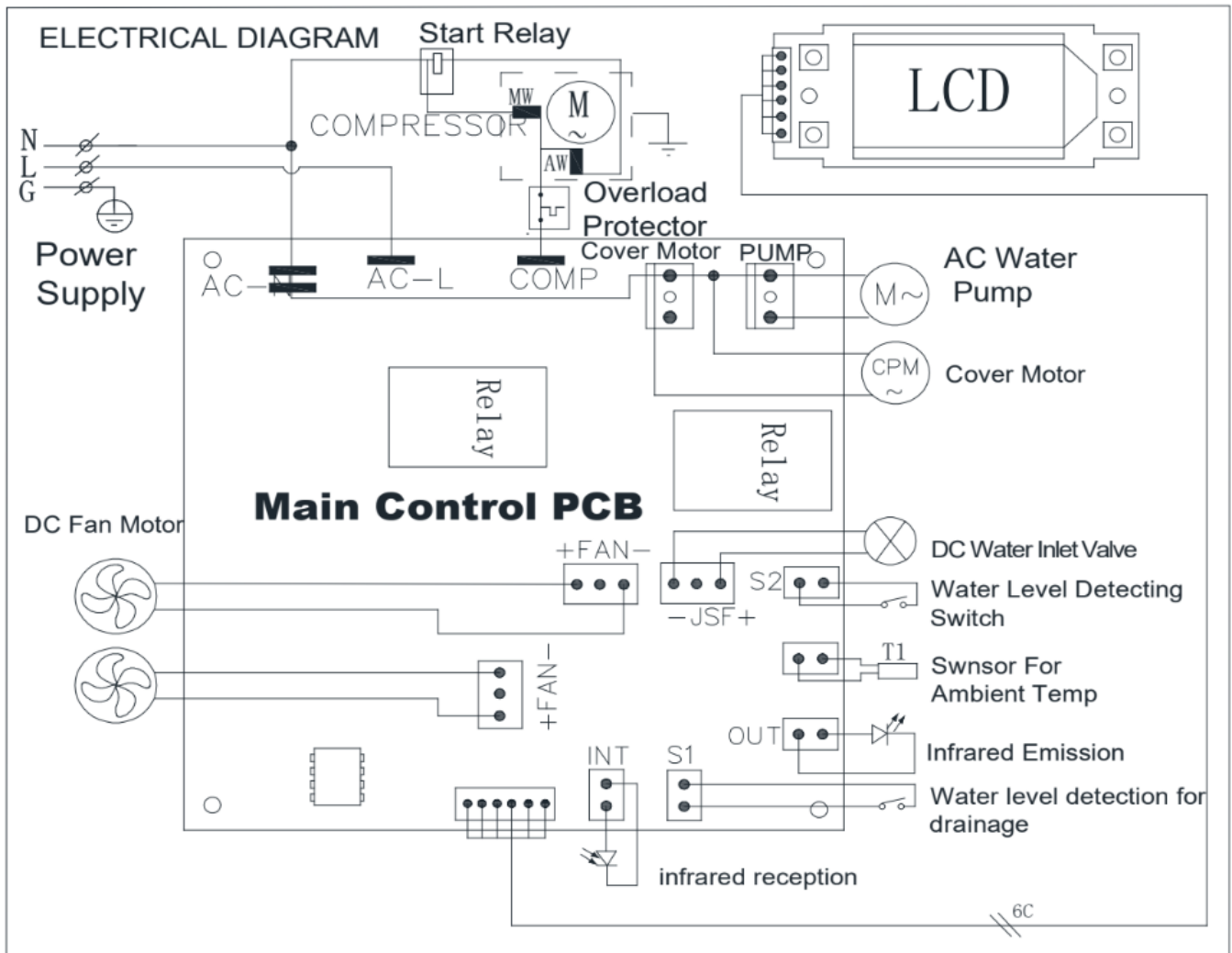
If the ice maker will not be used for a long time, or is to be moved to another place, it will be necessary to drain out all of the water in the system.

- Allow all ice cubes to be ejected from the evaporator of ice maker.
- Turn off the unit, and unplug the power cord.
- Shut off the water supply at the main water supply.
- Disconnect the water supply hose from the water inlet valve.
- Pull out the water drain pipe from the water tank to drain all the water. Once the tank is completely empty, securely reinstall the drain pipe.
- Then drain out all of the water from the water drain port located at unit back indicating "7" in above illustration.
- Disconnect the water drain pipe to the main drain pipeline or floor drain, and replace the drain cap securely.
- Leave the door open for air circulation and to prevent mold and mildew.
- Leave water supply hose and power cord disconnected until ready to reuse.
- Dry the interior & wipe the outside of the unit.
- Cover the unit with a plastic bag to protect it from dust and dirt.

Troubleshooting

Problem	Possible Cause	Solution
"⚠️ ❄️" symbol is displayed and the arrow flashes	<ul style="list-style-type: none"> Lack of water. Too much ice. 	<ul style="list-style-type: none"> Stop the ice maker, add water, and press the "ICE/CLEAN" button again to restart the unit. Remove excess ice. Check for and remove any obstructions inside or around the ice storage area.
"❄️ ❄️" symbol is displayed and letter "F" flashes	<ul style="list-style-type: none"> (No ice cube inside.) 	<ul style="list-style-type: none"> Press the "ICE/CLEAN" button for 5 seconds. The cleaning cycle will run for 80 minutes.
E1	<ul style="list-style-type: none"> Ambient temperature or inner tank water temperature is too high. Refrigerant leakage. Cover motor failure. Blocked cooling system pipe. 	<ul style="list-style-type: none"> Ensure the ambient temperature is below 90°F (32°C) and add cooler water to the tank. Press the "ICE" button twice to restart the ice-making program. If the issue persists, contact a qualified technician.
Making Ice too Slowly	<ul style="list-style-type: none"> Hot air outlet is blocked. Water temperature in the inner tank is too high. Refrigeration system malfunction. 	<ul style="list-style-type: none"> Ensure the hot air outlet has at least 6 inches (15 cm) of clearance for proper ventilation. Maintain water temperature between 45°F–90°F (7°C–32°C). Contact a qualified technician for service.
Water Leakage	<ul style="list-style-type: none"> Drain plug not installed properly. Loose pipe connection. Seal has reached the end of its service life. 	<ul style="list-style-type: none"> Reinstall the drain plug securely. Check and tighten pipe connections. Contact a qualified technician for inspection or repair.

Circuit Diagram





WARRANTY

LIMITED WARRANTY

KoolMore Supply Inc. extends a limited warranty to the original purchaser, guaranteeing that this KoolMore product is free from manufacturing defects in material or workmanship for one year from the date of purchase.

Should you discover any such defect within the warranty period, KoolMore Supply Inc. reserves the right to repair or replace the product without charge, or to cover the cost of replacement parts and repair labor needed to correct defects present at the time of purchase or resulting from regular usage, when the appliance has been installed, operated, and maintained as per the instructions provided.

At its sole discretion, KoolMore Supply Inc. may decide to replace the product. In such an event, your replacement appliance will carry the warranty for the remaining term of the original unit's warranty period.

This warranty is valid exclusively to the original purchaser of the product and only applicable within the United States. The warranty commences from the date of original consumer purchase. Proof of the original purchase date will be required to obtain service under this warranty.

Under this limited warranty, your sole and exclusive remedy will be product repair, as outlined above. All services must be provided by a KoolMore designated service company.

To claim warranty or request repair service:

Email support@koolmore.com. Please include your name, address, phone number, warranty repair request, and a copy of your proof of purchase receipt. Alternatively, visit koolmore.com and use the Contact Us page. A KoolMore customer service representative will promptly arrange service for your appliance.

We thank you for choosing KoolMore.

WARRANTY EXCLUSIONS

This limited warranty will not cover:

1. Failure of the product to perform during power failures or interruptions, or due to inadequate electrical service.
2. Damage incurred during transportation or handling.
3. Damage caused by accidents, vermin, lightning, winds, fire, floods, or acts of God.
4. Damage resulting from accidents, alterations, misuse, abuse, improper installation, repair, or maintenance. This includes using any external device that alters or converts the voltage or frequency of electricity.
5. Unauthorized product modifications, repairs by unauthorized centers, or use of non-approved replacement parts.
6. Abnormal cleaning and maintenance not aligned with the user's manual.
7. Use of incompatible accessories or components.
8. Any costs associated with repairs or replacements under these excluded circumstances shall be the responsibility of the consumer.

