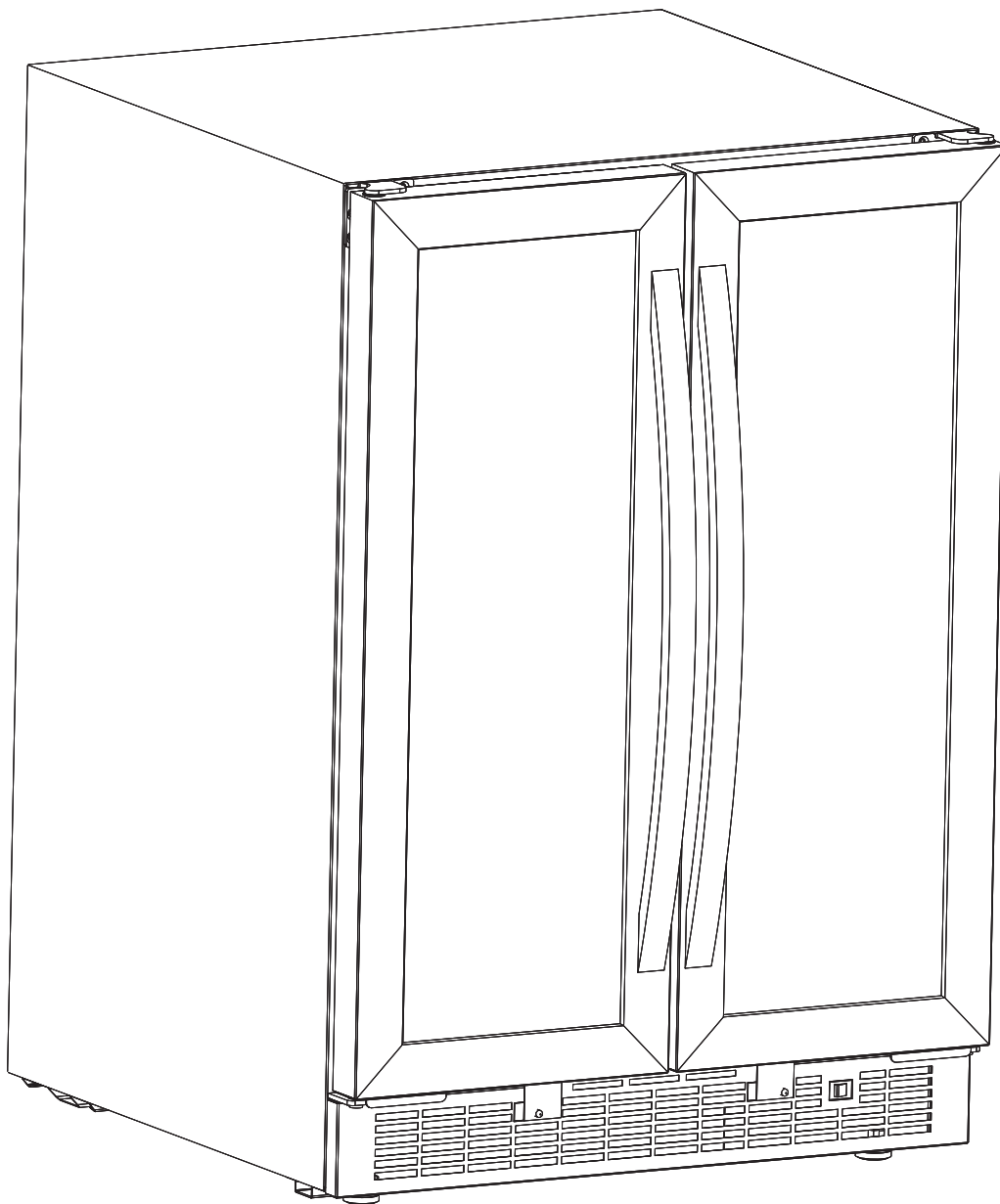




# ***User Manual***

## ***DUAL ZONE BUILT-IN WINE AND BEVERAGE COOLER***



***Unit must be  
kept clear of combustibles at all times.***

***KM-CWB1830-SS***



## Important Safety Information

### READ AND FOLLOW ALL SAFETY INSTRUCTIONS

#### SAFETY REQUIREMENTS

**DANGER:** Risk of fire or explosion. Flammable refrigerant used. Do not puncture refrigerant tubing.

- Do not use mechanical devices to defrost refrigerator.
- Ensure that servicing is done by factory authorized service personnel, to minimize product damage or safety issues.
- If the power supply cord is damaged, it must be replaced by the manufacturer, its service agent or similar qualified person in order to avoid hazard.
- Consult repair manual or owner's guide before attempting to service this product. All safety precautions must be followed.
- Dispose of properly in accordance with federal or local regulations.
- Follow handling instructions carefully.
- Do not store explosive substances such as aerosol cans with a flammable propellant in this appliance.

**WARNING:** Keep ventilation openings, in the appliance enclosure or in the built-in structure, clear of obstruction.

**WARNING:** Do not use mechanical devices or other means to accelerate the defrosting process, other than those recommended by the manufacturer.

**WARNING:** Do not damage the refrigerant circuit.

**WARNING:** Do not use electrical appliances inside the food storage compartments of the appliance, unless they are of the type recommended by the manufacturer.

**CAUTION:** Children should be supervised to ensure that they do not play with the appliance.

**DANGER:** Risk of child entrapment. Before throwing away an old appliance:

- Remove the door or lid.
- Leave shelves in place so that children may not easily climb inside.

**DANGER:** Do not add a lock to the door or lid. This can cause child entrapment and harm.

#### SAFETY REQUIREMENTS

This appliance is not intended for use by persons (including children) whose physical, sensory or mental capabilities may be different or reduced, or who lack experience or knowledge, unless such persons receive supervision or training to operate the appliance by a person responsible for their safety.

This appliance is intended to be used in household and similar applications such as:

- Staff kitchen areas in shops, offices and other working environments;
- Farm houses and by clients in hotels, motels and other residential type environments;
- Bed and breakfast type environments;
- Catering and similar non-retail applications.

#### GROUNDING INSTRUCTIONS

This appliance must be grounded. Grounding reduces the risk of electrical shock by providing an escape wire for the electrical current.

This appliance has a cord that has a grounding wire with a 3-prong plug. The power cord must be plugged into an outlet that is properly grounded. If the outlet is a 2-prong wall outlet, it must be replaced with a properly grounded 3-prong wall outlet. The serial rating plate indicates the voltage and frequency the appliance is designed for.

**WARNING** - Improper use of the grounding plug can result in a risk of electric shock. Consult a qualified electrician or service agent if the grounding instructions are not completely understood, or if doubt exists as to whether the appliance is properly grounded.

**Do not connect your appliance to extension cords or together with another appliance in the same wall outlet.** Do not splice the power cord. Do not under any circumstances cut or remove the third ground prong from the power cord. Do not use extension cords or ungrounded (two prongs) adapters.

Necessity to allow disconnection of the appliance from the supply after installation. The disconnection may be achieved by having the plug accessible or by incorporating a switch in the fixed wiring in accordance with the wiring rules.

**SAVE THESE INSTRUCTIONS!**

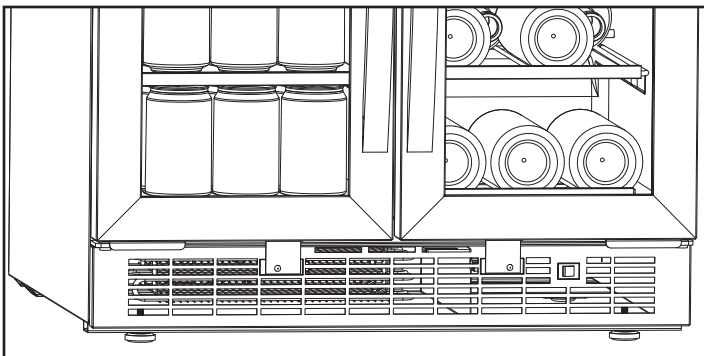
# INSTALLATION INSTRUCTIONS

## LOCATION

- Two people should be used when moving the appliance.
- Remove interior and exterior packaging prior to installation. Wipe the outside of the appliance with a soft, dry cloth and the inside with a lukewarm wet cloth.
- Place the appliance on a floor that is strong enough to support it when it is fully loaded.
- Do not place the appliance in direct sunlight or near sources of heat, such as a stove or heater, as this can increase electrical consumption. Extreme cold ambient temperatures may also cause the appliance to perform improperly.
- Do not use the appliance near water, for example in a wet basement or near a sink.
- This appliance is intended for household use only. It is not designed for outside installation, including anywhere that is not temperature controlled (garages, porches, vehicles, etc.).
- Before connecting the appliance to a power source, let it stand upright for approximately 6 hours. This will reduce the possibility of a malfunction in the cooling system from handling during transportation.
- This appliance is 23.8 inches (60.5 cm) wide, 34.7 inches (88.2 cm) high at maximum leg height and 25.4 inches (64.5 cm) deep including the handle.

## FRONT VENT

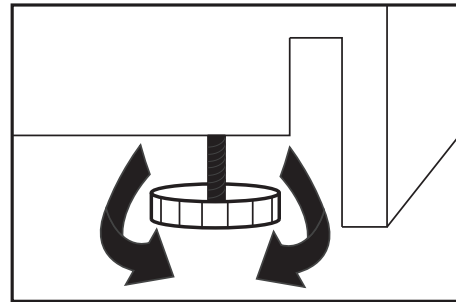
This appliance is front breathing. Do not block the front air vent as this will result in high operating temperatures, higher energy usage and possible system overheating and failure.



## LEVELING INSTRUCTIONS

There is an adjustable leg on the bottom of the appliance that can be turned up or down to ensure that the appliance is level. It is important that the appliance is level to minimize noise and vibration. To level the appliance:

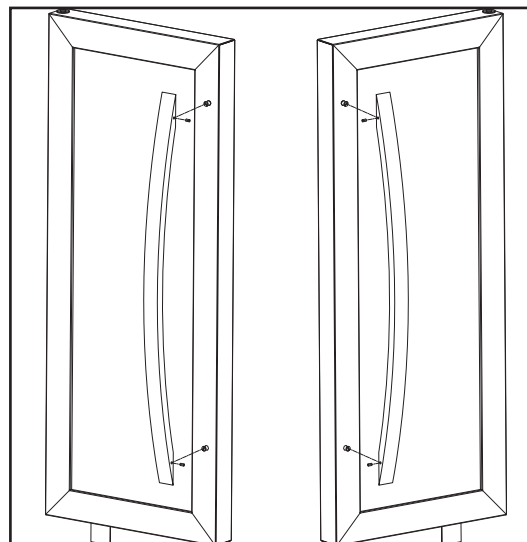
1. Move the appliance to its final location.
2. Turn the leveling leg counter-clockwise as far as it will go, until the top of the foot is touching the bottom of the chassis.
3. Slowly turn the leveling leg clockwise until the appliance is level.



## HANDLE INSTALLATION

The appliance ships with the handle inside the cabinet to protect it from damage. It must be installed by the end user.

1. Position the handle onto the column on the door.
2. Tighten the screws in the side of the handle until snug.



# INSTALLATION INSTRUCTIONS

## PREPARING THE ENCLOSURE

Gloves and safety goggles should be worn during installation.

It is not recommended to install the appliance into a corner or directly beside a wall. The door will need to be opened more than 90° to allow full extension of the shelves. If it is necessary to place the unit next to a wall or in a corner, leave at least 2-4 inches (5-10 cm) of space between the wall and the appliance to allow for the door opening.

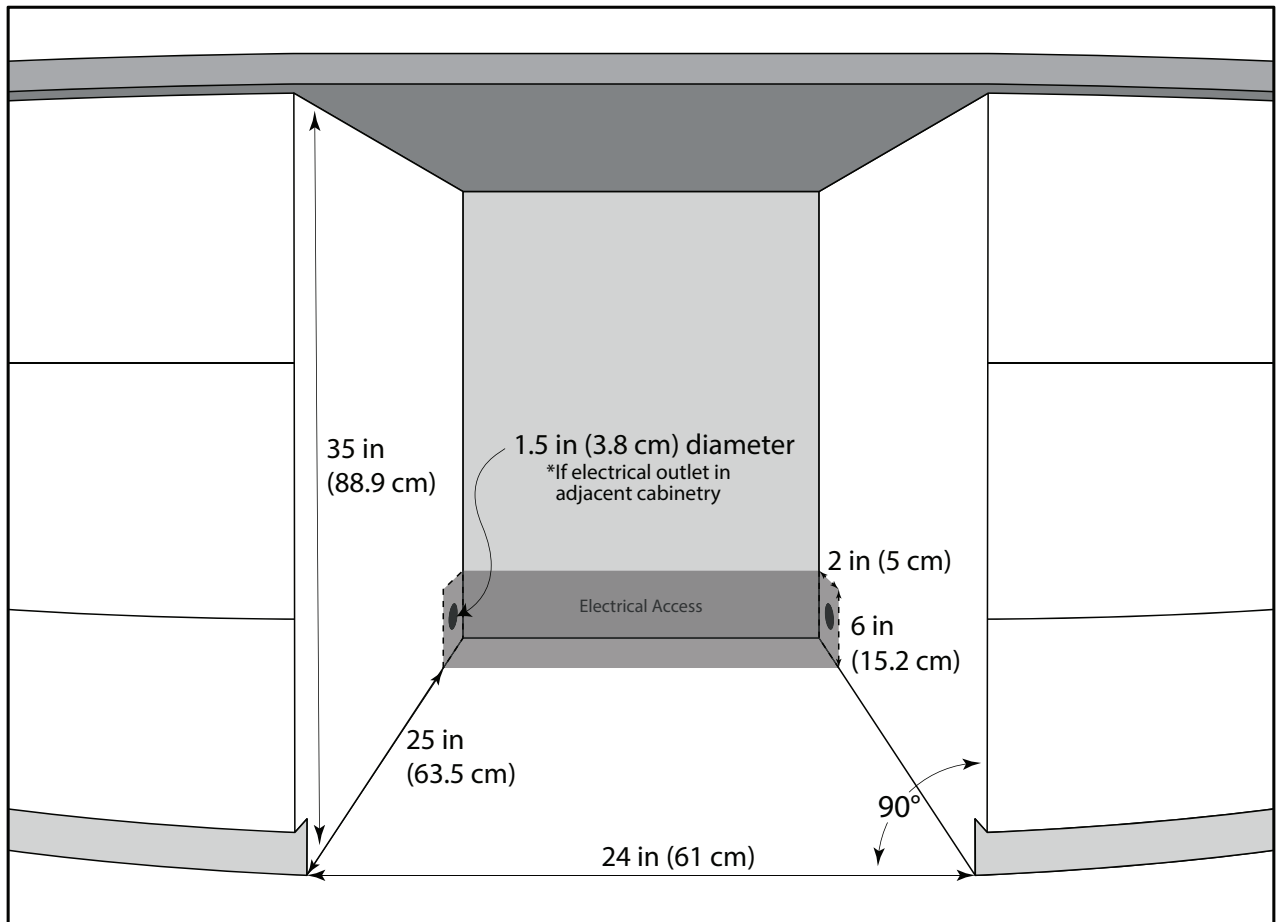
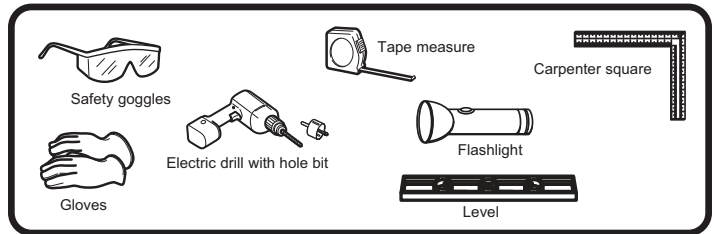
The cabinet opening must be at least 24 inches (61 cm) wide by 35 inches (88.9 cm) high by 25 inches (63.5 cm) deep.

**Note:** The listed depth requirement is assuming that the electrical outlet is located in the adjacent cabinetry or flush mounted in the rear wall, not surface mounted inside the enclosure.

If the electrical outlet is located inside adjacent cabinetry, cut a 1.5 inch (3.8 cm) diameter hole to admit the power cord. If the cabinet wall is metal, the hole edge must be covered with a bushing or grommet.

## REQUIRED TOOLS

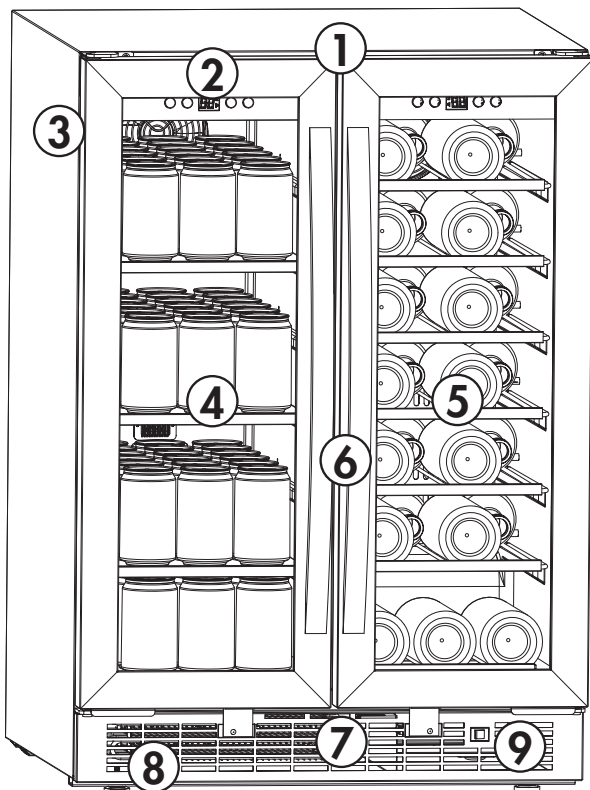
- Safety goggles
- Gloves
- Tape measure
- Carpenter square
- Level
- Flashlight
- Electric drill with hole bit



# OPERATING INSTRUCTIONS

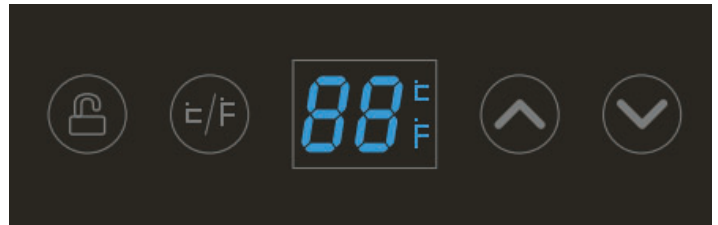
## FEATURES

- 1. Twin Door Design:** Divided compartments allow for separate storage of different types of beverages. Low-E glass used to reflect and absorb heat and keep beverages cold.
- 2. Independent Thermostats:** Each compartment has a dedicated thermostat which sets the temperature according to the consumer preference.
- 3. Magnetic Door Gaskets:** Tight fitting seals retain all the cool air and humidity levels.
- 4. Glass Shelves**
- 5. Wire Shelves**
- 6. Handles**
- 7. Front Mounted Exhaust:** Allows for integrated (built-in) applications.
- 8. Leveling Legs:** Adjust to level the appliance.
- 9. Light Switch:** Allows for constant illumination of the interior of the appliance.
- 10. Interior Light (not shown):** Blue LED lighting illuminates the interior without the heat of an incandescent bulb.



## CONTROL PANEL

- 1. Lock Button:** Press and hold for 3 seconds to lock the control panel. No buttons can be pressed while the control panel is locked. Press and hold the lock button for 3 seconds to unlock the control panel.
- 2. °C / °F: Button:** Press to change the temperature display between °C and °F.
- 3. Temperature Display:** Shows the set temperature.
- 4. Up and Down Buttons:** Used to increase or decrease the set temperature in 1° increments.



## FUNCTION INSTRUCTION

The default temperature setting is 54°F (12°C). The default temperature scale is °C. Press the °C / °F button to change the temperature scale.

**Beverage Zone (left side):** The temperature can be set as low as 37°F (3°C) or as high as 64°F (18°C).

**Wine Zone (right side):** The temperature can be set as low as 39°F (4°C) or as high as 64°F (18°C)

Actual temperature inside the appliance can vary based on ambient temperature, how often the door is opened and how many warm bottles or cans have recently been added to the appliance.

## INTERIOR LIGHT

The interior light will default to turning on and off when the door is opened or closed.

The light switch can be used to set the light to constant illumination when the door is both open and closed.

If the door is open for more than 10 minutes, the interior light will automatically turn off.

## OPERATING INSTRUCTIONS

### STORAGE INSTRUCTIONS

The maximum capacity of this appliance is 27 (750 ml) wine bottles and 60 (355 ml) cans. In order to achieve the maximum storage capacity of 27 bottles and 60 beverage cans:

**Wine Compartment (Right):** It will be necessary to position the bottles alternately head-to-tail. This will allow for the storage of four bottles on each shelf and three bottles on the bottom for a total storage capacity of 27 wine bottles.

**Beverage Compartment (Left):** A total of 18 cans can be placed on each shelf and six cans can be placed on the bottom for a total storage capacity of 60 beverage cans.

### DEFROST

This unit is equipped with an automatic defrost function and does not require manual defrosting. Defrost water from the appliance is channeled into a drip tray located above the compressor. Heat transfer from the compressor causes the defrost water to evaporate.

### POWER FAILURE

Most power failures are corrected within a few hours and should not affect the temperature of your appliance if you minimize the number of times the door is opened. If the power is going to be off for a longer period of time, take the proper steps to protect your contents.

**Note:** Wait 3 to 5 minutes before attempting to restart the appliance if operation has been interrupted.

### VACATION

- **Short vacations:** Leave the appliance operating during vacations of less than three weeks.
- **Long vacations:** If the appliance will not be used for several months, remove all items and turn off the appliance. Clean and dry the interior thoroughly. To prevent odor and mold growth, leave the door open slightly, blocking it open if necessary.

## CARE & MAINTENANCE

### CLEANING

Ensure the appliance is unplugged before cleaning.

- To clean the inside of the appliance, use a soft cloth and a solution of a tablespoon of baking soda to one quart of water or a mild soap solution or some mild detergent.
- Wash removable shelves in a mild detergent solution, then dry and wipe with a soft cloth.
- Clean the outside with a soft, damp cloth and some mild detergent.
- It is important to keep the area clean where the door seals against the cabinet. Clean this area with a soapy cloth. Rinse with a damp cloth and let dry.

**Note:** Do not use cleaners containing ammonia or alcohol on the appliance. Ammonia or alcohol can damage the appearance of the appliance. Never use any commercial or abrasive cleaners or sharp objects on any part of the appliance.

### MOVING

- Make sure the appliance is empty.
- Secure the shelves with tape.
- Secure the door with tape.
- Turn the adjustable foot up to the base to avoid damage.
- Protect the outside of the appliance with a blanket or similar item.
- Be sure the appliance stays in the upright position during transportation.
- If the appliance is placed on its back or side during transportation, upon reaching the destination, allow it to remain upright for 6 hours before plugging in to avoid damage to internal components.

### DISPOSAL

This appliance may not be treated as regular household waste, it should be taken to the appropriate waste collection point for recycling of electrical components. For information on local waste collection points, contact your local waste removal agency or government office.

## TROUBLESHOOTING

PROBLEM	POSSIBLE CAUSE
No power	<ul style="list-style-type: none"> <li>• A fuse may be blown or the circuit breaker tripped</li> <li>• Plug not fully inserted into the wall outlet</li> </ul>
Internal temperature not cold enough Appliance runs continuously	<ul style="list-style-type: none"> <li>• Door is not shut properly or opened excessively</li> <li>• Exhaust vent is obstructed</li> <li>• Recently added a large quantity of warm bottles to the cabinet</li> <li>• Close proximity to heat source or direct sunlight</li> <li>• Ambient temperature or humidity is very high</li> <li>• Possible system leak, evaporator fan failure or compressor failure</li> </ul>
Condensation on the cabinet or door	<ul style="list-style-type: none"> <li>• Door is not shut properly or opened excessively</li> <li>• Ambient temperature or humidity is very high</li> </ul>

## ERROR CODES

<b>C0</b>	• control system communication fault
<b>E1</b>	• interior sensor fault
<b>E2</b>	• defrost sensor fault
<b>dr</b>	• door is open for more than 1 minute
<b>EH</b>	• internal temperature is 8 degrees higher than the set temperature for more than 30 minutes
<b>EL</b>	• internal temperature is 8 degrees lower than the set temperature for more than 30 minutes

If error codes appear on the display for more than 5 minutes, a power reset may rectify the issue. Unplug the appliance, wait 5 minutes and then plug the appliance back in. If the error code persists after a power reset, contact consumer care or an authorized service agent.



# Warranty

## **Limited Service Warranty Valid only in the United States**

### **1 Year Parts and Labor Warranty**

Unless otherwise stated, Koolmore Supply Inc. warrants to the original purchaser of new Koolmore wine cooler, that such equipment will be free from defects in material and workmanship for a period of 1 year from the date of delivery. Valid only in the Continental United States.

### **Coverage Limitations**

The 1 year parts and labor warranty do not cover:

Failure to install and/or use the equipment within proper operating conditions specified by Koolmore. This includes but is not limited to residential, outdoor, or mobile applications.

Any adjustments necessitated by improper operating conditions.

Damage caused by improper electrical connection, power failure, or generators.

Failure to properly maintain the unit including all preventive maintenance and cleaning.

Equipment sold or used outside of United States, equipment purchased second-hand, equipment sold by an unauthorized reseller, and equipment expressly sold without warranty coverage.

Equipment without a valid serial number and proof of purchase, or other way to verify warranty coverage.

Equipment that has not been used appropriately or was subject to misuse, neglect, abuse, accident, alteration, negligence, damage during transit, delivery or installation, fire, flood, or an act of God.

Equipment that has been altered, modified, or repaired by anyone other than an authorized service agency outside of preventative maintenance and cleaning.

Parts deemed by Koolmore to be normal wear and tear parts, including hoses and select plastic or rubber components.

### **For Warranty Inquiries or Service:**

This warranty is only valid on equipment purchased from an authorized dealer.

Locate the model number.

Next, call 1-718-576-6342. You must have the model number when contacting service technicians.

Failure to contact Koolmore prior to obtaining equipment service may void your warrant

