



# SPEC SHEET

## KoolMore 32 in. Outdoor Wood Fired Pizza Oven in Stainless-Steel

Model: KM-OKS-WFPO

### FEATURES

- Commercial Outdoor Pizza Oven
- Convenient Wood-Burning Design
- Flue Damper Control
- Heat Flow and Smoke Retention
- Built-In Chimney
- Stainless-Steel Construction



### CLOSE UP IMAGES



# TECHNICAL SPECS

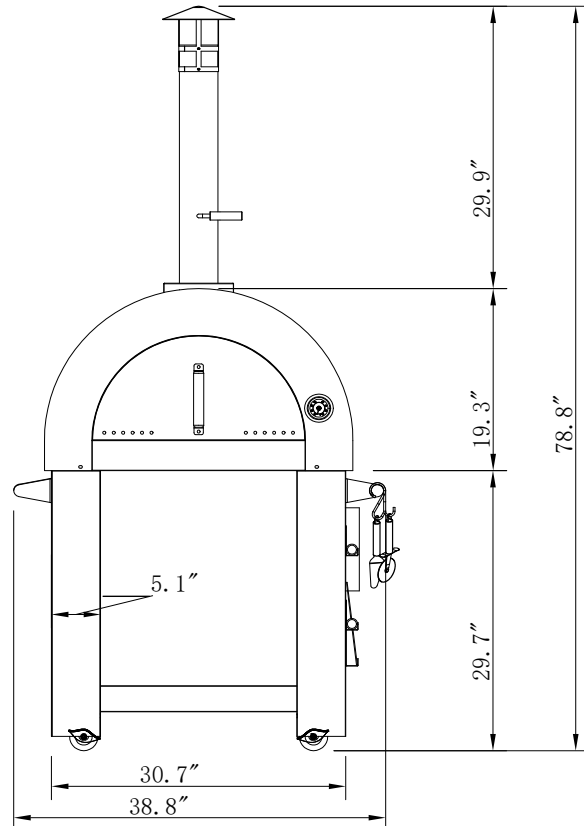
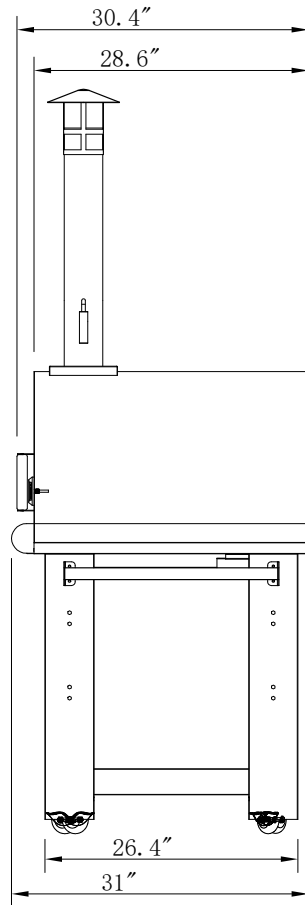
## Dimensions

Length	39
Width	32
Height	79.13
Interior Depth	28.3
Interior Width	31.9

## Features

Ignition Type	NA
Color Finish	Stainless-Steel
Exterior Material	430 Stainless-Steel
Fuel Type	Wood
Maximum Heating Temperature Fahrenheit	NA
Pizza Size	Two 12 In.
Assembly Required	Yes
Casters	4
Pizza Stone Included	Yes
Preheat Time	5-10 Min.
Thermometer	Yes

# Plan View



706 Eastern Parkway STE 1G, Brooklyn NY 11213  
718-576-6342  
info@koolmore.com