



SPEC SHEET

KoolMore 36 in. Commercial Refrigerated Prep Station Cold Table, Stainless-Steel Refrigerator with 6 Pan Storage with Cover and Two Adjustable Shelves

SKU: KM-RBT-36C

FEATURES

- Commercial Cold Table Refrigerator
- Stainless-Steel Refrigeration Unit
- Automatic Defrost
- Digital Temperature Control
- 1-Year Parts and Labor; 5-Year Compressor Warranty
- Voltage: 115V/60Hz
- ETL Certified for Safety and Sanitation



CLOSE UP IMAGES



TECHNICAL SPECS

Dimensions

Depth	36.4
Width	29.5
Height	35.2
Interior Depth	19.8
Interior Width	33
Interior Height	23.5
Shelf Width	15.8
Shelf Depth	17.1
Depth Including Handles	29.5
Depth Excluding Handles	29.5
Depth Less Door	45.5
Depth With Door Open 90 Degrees	45.5
Power Cord Length	98.5

Capacity

Weight	242
Gross Cubic Feet	10
Net Capacity Cu. Ft.	8.5
Individual Shelf Capacity	88 lbs.
Pan Capacity	6

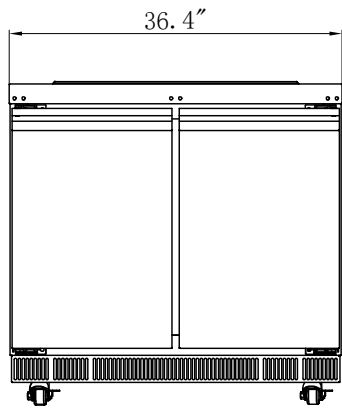
Features & Material

Door Style	Swing
Number Of Doors	2
Number Of Shelves	2
Defrost Type	Automatic
Refrigerant Type	R290
Temperature Control Type	Digital
Ambient Temperature Range	90 F
Temperature Range	33-40 F
Casters	4
Light Type	No Light
Shelf Material Type	Plastic Coated
Interior Material	SS 201
Exterior Material	SS 430

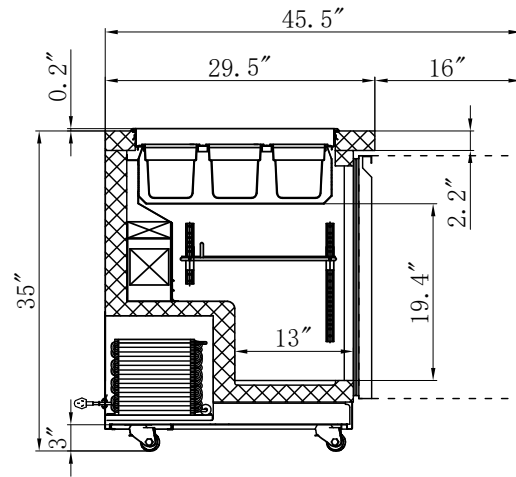
Electric Data & Certifications

Amps	4
Phase	1
Plug Type	NEMA 5-15P
Voltage	115
Hertz	60
Wattage	384
Horsepower	0.4352
Certifications	ETL Listed for Safety and Sanitation

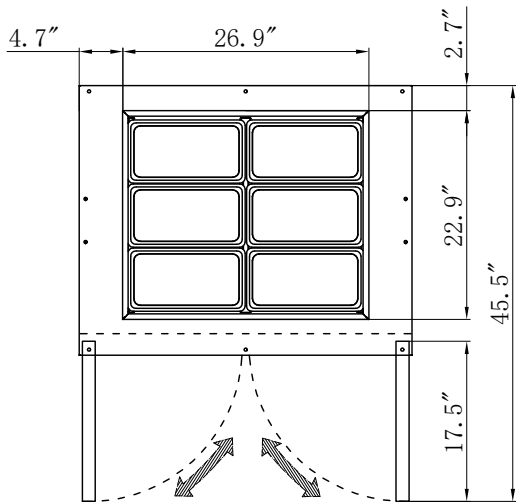
Plan View



ELEVATION



SECTION VIEW



PLAN

CERTIFICATIONS



Intertek



Intertek



706 Eastern Parkway STE 1G, Brooklyn NY 11213
 718-576-6342
 info@koolmore.com