



# SPEC SHEET

## KoolMore 20 Cu. Ft. Commercial Reach-in Refrigerator in White with Manual Defrost

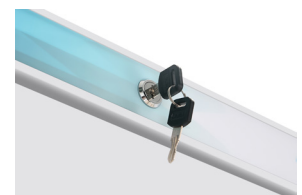
Model: KM-RMD20WH

### FEATURES

- External digital control and display for temperature control to monitor and control the temperature easily
- Clean White Exterior Finish
- Temperature range 32-50
- 3 adjustable shelves
- Spacious 20 cu. ft.
- 2 casters for convenient movement



### CLOSE UP IMAGES



# TECHNICAL SPECS

## Dimensions

Length	30.1
Width	27.4
Height	74.4
Interior Depth	21.7
Interior Width	24.8
Interior Height	65.4
Shelf Width	24.71
Shelf Depth	20.75

## Capacity

Cubic Feet	21
Individual Shelf Capacity	88 lbs.

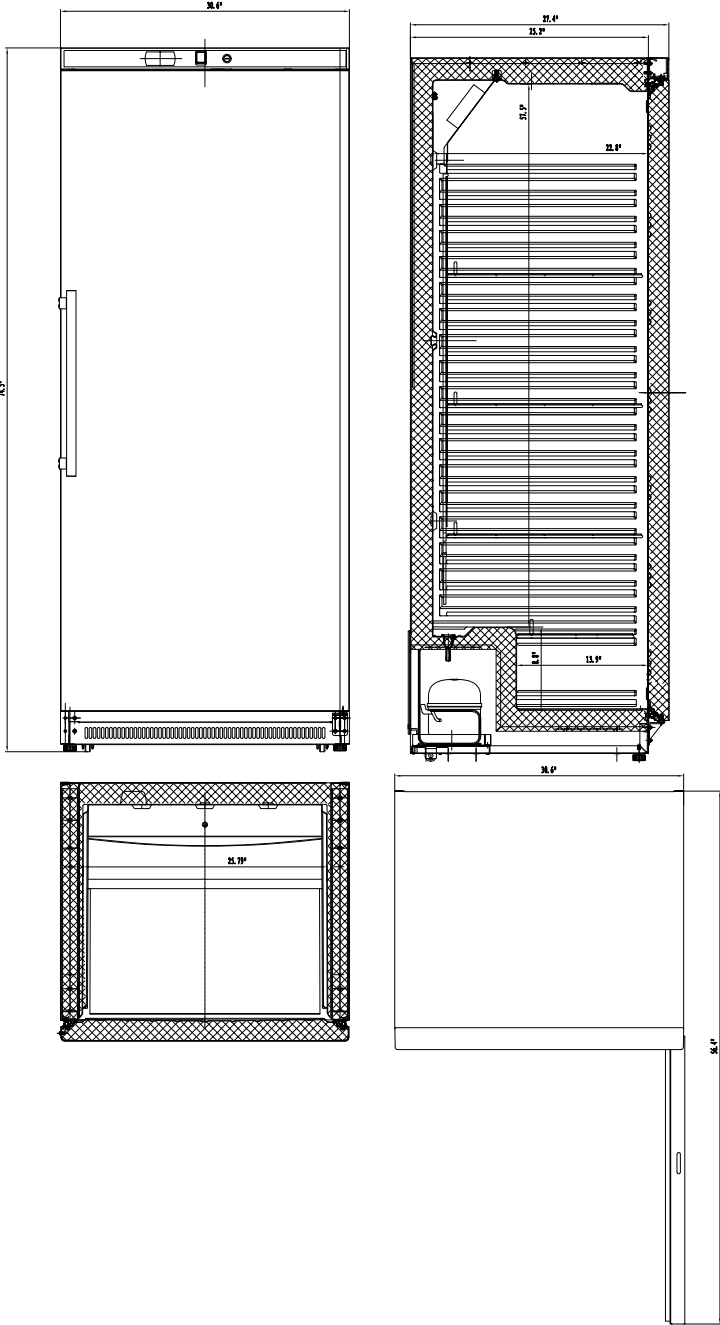
## Features & Materials

Ambient Temperature Range	90 F
Defrost Type	Manual
Depth Including Handles	29.6
Depth Excluding Handles	27.4
Depth Less Door	25.2
Depth With Door Open 90 Degrees	56.5
Door Style	Swing
Number Of Doors	1
Number Of Shelves	4
Plug Type	NEMA 5-15P
Refrigerant Type	R-600a
Shelf Material Type	Coated Steel Wire
Temperature Control Type	External Digital
Temperature Range	28-50 F
Casters	2
Interior Material	PVC
Exterior Material	Powder Coated Steel

## Electric & Certifications

Voltage	115
Phase	1
Hertz	60
Wattage	148
Horsepower	0.2
Amps	3.6
Power Cord Length	70.8
Certifications	ETL Listed For Safety and Sanitation

# Plan View



### CERTIFICATIONS



718-576-6342  
info@koolmore.com