



# SPEC SHEET

## 30 In. 20 Cu. Ft. Top-Freezer Residential Refrigerator In Stainless Steel, Energy Star Certified

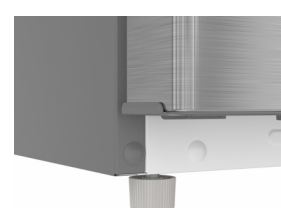
Model: KM-TMR-20-SS

### FEATURES

- **Large 20.5 Cu. Ft. Capacity:** Offers 14.7 cu. ft. of refrigerator space and 5.8 cu. ft. of freezer capacity, providing ample storage while remaining suitable for residential kitchens.
- **Total No-Frost Cooling System:** The automatic no-frost cooling system prevents ice buildup in both the refrigerator and freezer, maintaining consistent temperatures.
- **Energy Star Certified:** Designed for efficiency with an annual energy consumption of 390 kWh, helping to reduce electricity costs.
- **Adjustable Glass Shelving:** Three adjustable tempered glass shelves, each supporting up to 30 lbs., accommodate tall bottles, large containers, and flexible storage needs.
- **Spacious Door Storage:** Seven door bins (five in the refrigerator and two in the freezer) maximize vertical space and keep everyday items within easy reach.
- **Dual Crisper Drawers with Humidity Control:** Two dedicated crisper drawers help maintain proper humidity levels to preserve fruits and vegetables longer.
- **Bright, Energy-Efficient LED Interior Lighting:** LED lighting positioned at the top and sides of the refrigerator compartment provides clear visibility throughout the interior.
- **Quiet Operation:** Operating at just 42 dB, this refrigerator runs quietly, making it ideal for apartments, condos, and open-concept homes.
- **Reversible Doors for Flexible Installation:** Reversible swing doors allow left- or right-hand opening, making it easier to adapt the refrigerator to different kitchen layouts.
- **Safety Certified:** UL listed for safety and quality assurance, this refrigerator is backed by a 1-year parts and labor warranty.



### CLOSE UP IMAGES



# Technical Specs

## Dimensions & Weight

Length	32.68 in.
Width	29.72 in.
Height	66.61 in.
Weight	158.73 lbs.
Interior Depth	22.79 in.
Interior Width	29.21 in.
Interior Height	62.66 in.
Depth Less Door	28.9 in.
Depth With Door Open 90 Degrees	59.47 in.
Minimum Back Air Clearance	1 in.
Minimum Side Air Clearance	1 in.

## Electric & Certifications

Voltage	115
Wattage	170
Hertz	60
Amps	1.2
Phase	1
Energy Star	Yes
Plug Type	NEMA 5-15P
Power Cord Include	Yes
Power Cord Length	66.93 in.
Energy Consumption	390 kWh/year
Electrical Installation Type	Plug-in
Certifications	UL Listed for Safety

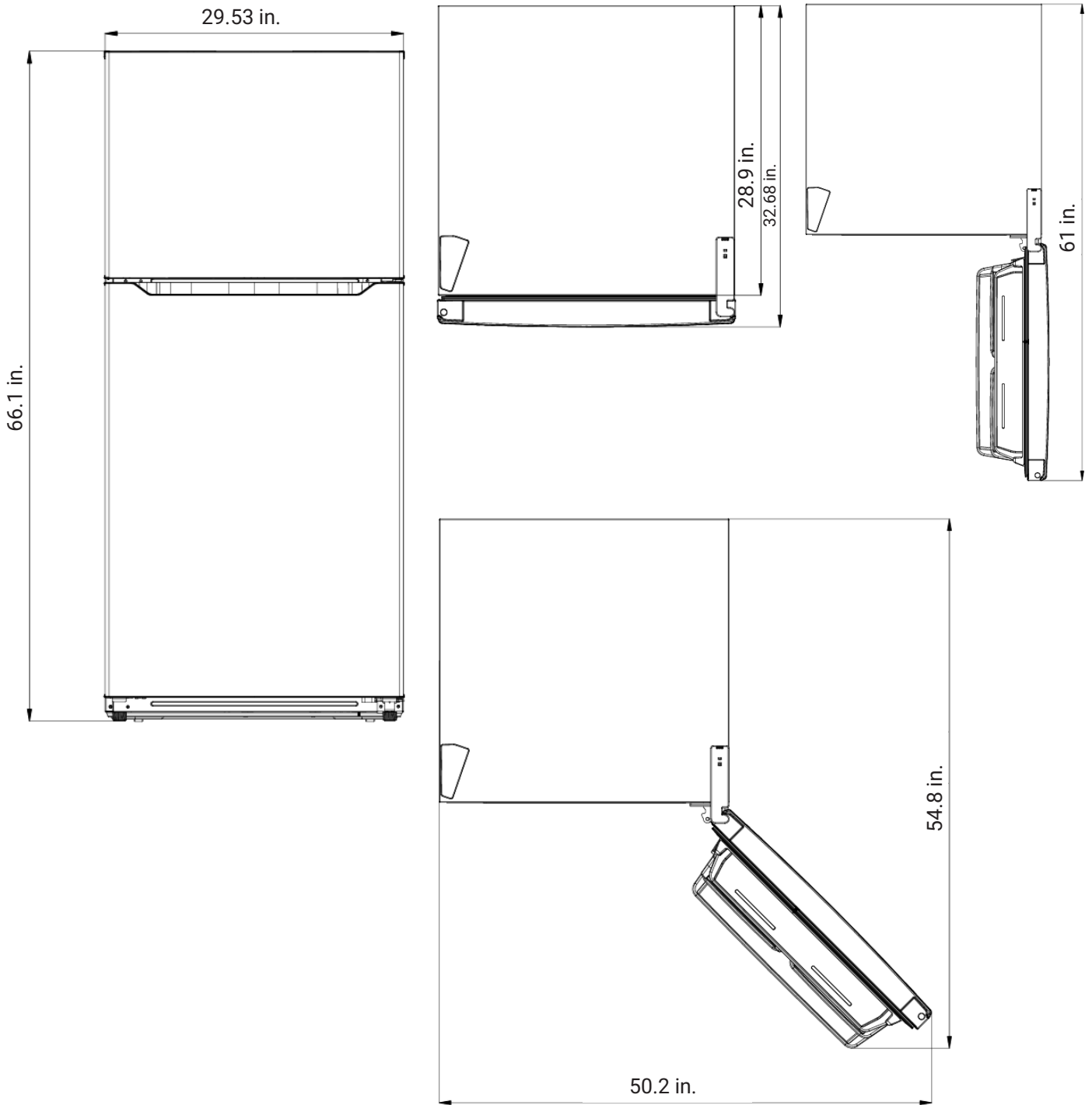
## Capacity

Net Cubic Feet	20.5
Refrigerator Cubic Feet	14.7
Freezer Cubic Feet	5.8
Individual Shelf Capacity	30 lbs
Crisper Capacity	.48 Cu. Ft.

## Features & Materials

Commercial Residential	Residential
Indoor Outdoor	Indoor
Defrost Type	No Frost
Cooling Unit Type	Automatic
Refrigerant Type	R600
Horsepower	0.31
Compressor Location	Rear
Control Type	Digital
Control Location	Refrigerator Interior Top Right
Temperature Range	Refrigerator: 34–50°F, Freezer: -8–5°F
Ambient Temperature Range	38–110°F
Number Of Doors	2
Door Style	Swing
Reversible Door	Yes
Self Closing Door	No
Number Of Shelves	3
Shelf Material Type	Tempered Glass
Shelves Adjustable	Yes
Slide Out Shelves	Yes
Number Of Crispers	2
Humidity Control Crisper	Yes
Number Of Door Bins	7
Interior Lights	LED
Interior Lights Location	Top and Sides of Refrigerator
Interior Lights Brightness	2W
Sabbath Mode	No
Noise	42 dB
Door Ajar Alarm	No
Exterior Material	PCM
Interior Material	PCM
Color Finish	Stainless-Steel
Interior Color	White
Number Of Feet	4
Legs Adjustable	Yes, 0.6 in.
Ice Maker	No
Ice Maker Ready	Yes
Handle Type	Recessed
Freezer Light	No

# Plan View



718-576-6342  
info@koolmore.com