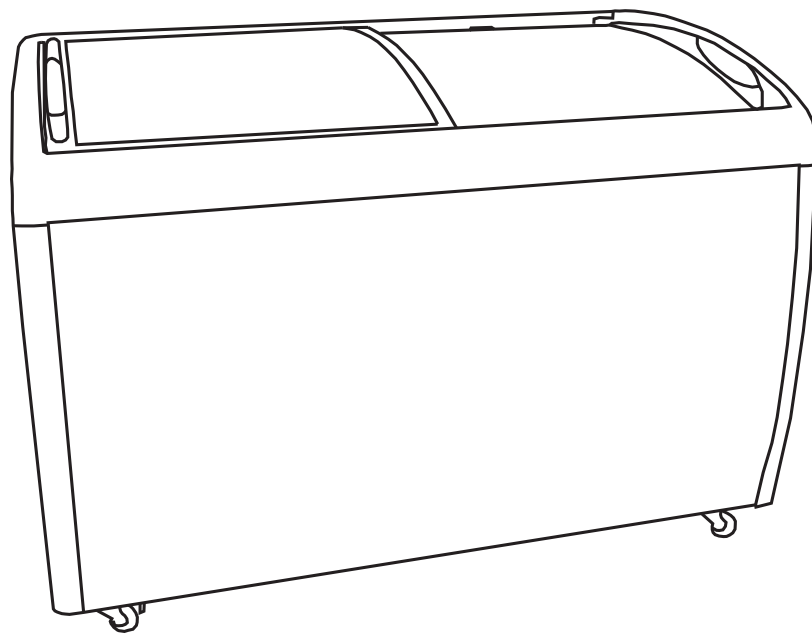


# Ice Cream Freezer

## KoolMore Display Ice Cream Freezer

**Model:** MCF-6C, MCF-9C, MCF-12C, MCF-16C, MCF-20C



***Before using, please read the operating instructions carefully to ensure proper application and achieve satisfactory results.***

For any service-related issues, please contact us:



718-576-6342



support@koolmore.com

***Stay informed with the latest information  
for your KoolMore Appliance.***

**If you need any assistance or have questions, our customer  
support team is here to help.**

# WARNING

## Warning!

*Danger: There is a risk of fire or explosion. This freezer must only be repaired by trained service personnel. Do not use any makeshift devices to defrost the refrigerator. Do not puncture refrigerant tubing.*

## How to Use

- After installation, let the freezer stand unplugged for at least 4 hours.
- The freezer's temperature control is tamper-proof to prevent accidental adjustments. Use a screwdriver to adjust if necessary.
- On initial startup, run the freezer for about one hour before storing food.
- To set the temperature, turn the control to the lowest point before placing food inside.
- Allow the interior to cool to 0°F before adding food.
- Put food in the freezer, and after 12 hours, readjust the temperature to your normal setting.
- Use the thermostat to adjust the temperature. Turning the knob clockwise increases the cold. The bigger the number, the colder the temperature.
- At the "Max" position, the freezer cools as quickly as possible. For steady ice cream temperature, set the control to "4" or "5".

## Indicator Lights

"**Power**" light indicates the freezer is on.

"**Run**" light shows that the compressor is operating.

# Transportation & Set Up

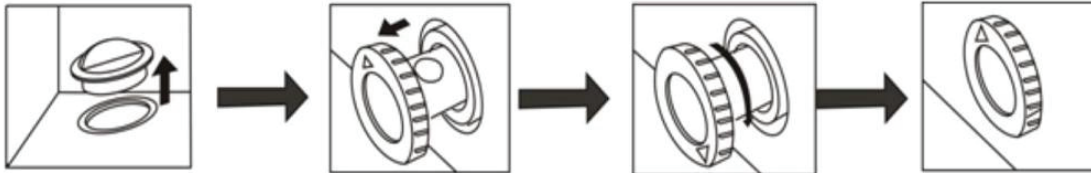
- Do not transport the unit on an incline of more than 45 degrees.
- Remove all packaging before using the freezer.
- Install the freezer in a well-ventilated area, with a 4" clearance around the cabinet walls for proper air circulation.
- Ensure the freezer is placed on a stable surface to avoid vibration and noise.
- Install the freezer in a dry area, do not use under direct sunlight, keep away from any corrosive materials.
- Before placing food inside the freezer, turn the temperature control to the lowest point (highest number) for several hours until the freeze reaches 0 degrees Fahrenheit, once it reaches 0 degrees Fahrenheit you may place food inside and adjust the controller to normal temperature.

## Safety

1. This appliance is not intended for use by persons (including children) with reduced physical, sensory or mental capabilities, or lack of experience and knowledge, unless they have been given supervision or instruction concerning use of the appliance by a person responsible for their safety.
2. If the supply cord is damaged, it must be replaced by the manufacturer or its service agent or a similarly qualified person in order to avoid a hazard.
3. Please according to local regulations regarding disposal of the appliance for its flammable blowing gas. Before you scrap the appliance, please take off the doors to prevent children trapped.
4. Wiring regulations shall be installed in accordance with national wiring regulations.
5. The appliance is to be installed in accordance with the Safety Standard for Refrigeration Systems, ANSI/ASHRAE 15.
6. Any person who is involved with working on or breaking into a refrigerant circuit should hold a current valid certificate that is issued by an assessment authority, which authorizes their competence to handle refrigerant safely in accordance with an industry-recognized assessment specification.
7. Never store flammable, explosive or corrosive products in the freezer, and keep the freezer away from such materials.
8. If power is cut off, wait at least 5 minutes before turning on again to avoid damage to the compressor.
9. The temperature control may need to be adjusted based on the amount of food in the freezer and the ambient room temperature. More food or a higher room temperature may require a lower temperature setting (higher number).
10. Never put hot food directly in to the freezer. Food should be cold or frozen before placing it inside.
11. The cabinet is intended exclusively for the storage and/or display of packaged food. For proper safety non-packaged foods should be packed in plastic bags or containers.
12. Do not overload the freezer, leave room between products to allow for proper air circulation.

## Defrosting

1. Defrost before being thickening over ice when the frost film in the cabinet is 5mm/1/5" thick.
2. For defrosting, turn off the power, take out the frozen foods, open the door for warming and melting ice. Use a cloth to absorb water and clean it up.
3. Ensure the water does not spill into the water channel.
4. Do not use sharp metal tools to remove ice or frost from the freezer, which might produce damage to the evaporator.
5. At the bottom of the freezer, there's a conduit for water. When defrosting, remove the rubber cover as illustrated so the water can drain out through the hole.



### Note:

*Make sure to keep the rubber cover safe while you're defrosting. Once defrosting is finished, remember to replace the rubber cover securely.*

## Maintenance Tips

Clean the freezer routinely. For cleaning, switch off the power, take out any items, and wash the interior with water or a mild, neutral detergent.

Avoid using boiling water, acids, harsh chemicals, petrol, oil, or abrasive powders.

After cleaning, ensure everything is thoroughly dried.

To clean the door seal, use a gentle soap solution. After letting it dry naturally, apply a bit of talcum powder to prolong its usability.

Wipe the exterior with a soft cloth dampened with water or a touch of detergent. Remember to keep electrical connections dry.

# Troubleshooting

Issue	Case	Solution
The indicator is not on. The compressor does not start.	The plug became loose and is not properly connected	Adjust the plug
	no power	Restore power
The indicator is on ,but the compressor does not run and makes a buzzing noise	The power voltage is <98V.	Put a power-regulator more than 1000W power together.
The compressor stops very shortly after starting, and restarts after a few minutes, repeatedly.	The power voltage is >132V.	
The compressor works normally, but the cabinet takes too long to cool	The door is opened too frequently.	Reduce open times.
	The freezer is overloaded or food is placed too close together	Adjust the placement of the product to leave space for proper ventilation of
	The frost film is too thick.	Defrost the unit
	The surface of the condenser is Dirty.	Clean the condenser.
	The door seals badly.	Adjust the door seal.
The noise is too loud	The freezer is on an unstable service	Move to a stable surface
	The fixing of the freezer is loose.	Tighten the fixing.
	There's contact between pipes.	Separate the pipes

The following are not issues but are to be expected as normal operation of your freezer

- The sound of water flowing during operation is normal; this is the refrigerant.
- When the humidity is high, dew may form on the surface of the freezer
- When the freezer is running, the condenser and compressor will be hot



# WARRANTY

## LIMITED WARRANTY

---

Koolmore Supply, Inc. extends a limited warranty to the original purchaser, guaranteeing that this Koolmore product is free from manufacturing defects in material or workmanship for one year from the date of purchase. Should you discover any such defect within the warranty period, Koolmore Supply, Inc., reserves the right to repair or replace the product without charge, or to cover the cost of replacement parts and repair labor needed to correct defects present at the time of purchase or resulting from regular usage, when the appliance has been installed, operated, and maintained as per the instructions provided. At its sole discretion, Koolmore Supply Inc. may decide to replace the product. In such an event, your replacement appliance will carry the warranty for the remaining term of the original unit's warranty period. This warranty is valid exclusively to the original purchaser of the product and only applicable within the United States. The warranty commences from the date of original consumer purchase. Proof of the original purchase date will be required to obtain service under this warranty. Under this limited warranty, your sole and exclusive remedy will be product repair, as outlined above. All services must be provided by a Koolmore-designated service company. To claim warranty or request repair service: Email [support@koolmore.com](mailto:support@koolmore.com). Please include your name, address, phone number, warranty repair request, and a copy of your proof of purchase receipt. Alternatively, visit [koolmore.com](http://koolmore.com) and use the contact us page. A Koolmore customer service representative will promptly arrange service for your appliance. We thank you for choosing Koolmore.

## WARRANTY EXCLUSIONS

---

This limited warranty will not cover:

1. Failure of the product to perform during power failures or interruptions, or due to inadequate electrical service.
2. Damage incurred during transportation or handling.
3. Damage caused by accidents, vermin, lightning, winds, fire, floods, or acts of God.
4. Damage resulting from accidents, alterations, misuse, abuse, improper installation, repair, or maintenance.

This includes using any external device that alters or converts the voltage or frequency of electricity.

5. Unauthorized product modifications, repairs by unauthorized centers, or use of non-approved replacement parts.
6. Abnormal cleaning and maintenance not aligned with the user's manual.
7. Use of incompatible accessories or components.
8. Any costs associated with repairs or replacements under these excluded circumstances shall be the responsibility of the consumer.

