



# SPEC SHEET

## KoolMore 28 in. One-Door Merchandiser Refrigerator - 23 Cu Ft.

SKU: MDR-1GD-23C

### FEATURES

- Automatic Defrost and Dynamic Cooling System
- LED Interior Illumination
- Double-Sided, Double-Layer Tempered Glass
- Adjustable Shelving
- Self-Evaporation Water Tray



### CLOSE UP IMAGES



# TECHNICAL SPECS

## Dimensions

Depth	31.8
Width	28.1
Height	84.7
Interior Depth	28.7
Interior Width	25.2
Interior Height	62.5
Shelf Width	24.3
Shelf Depth	23.2
Depth Including Handles	33.2
Depth Excluding Handles	31.9
Depth Less Door	29.9
Depth With Door Open 90 Degrees	58.2
Power Cord Length	98.5

## Capacity

Gross Cubic Feet	25.8
Net Capacity Cu. Ft.	22.6
Individual Shelf Capacity	88l bs.

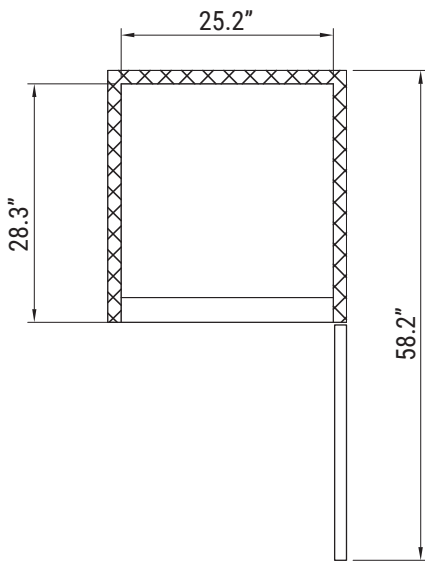
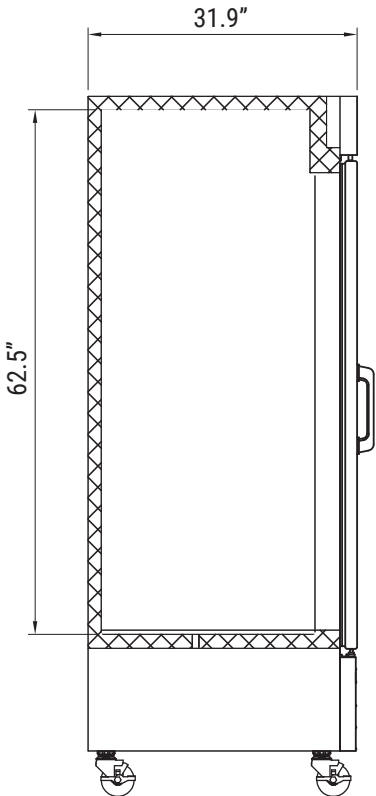
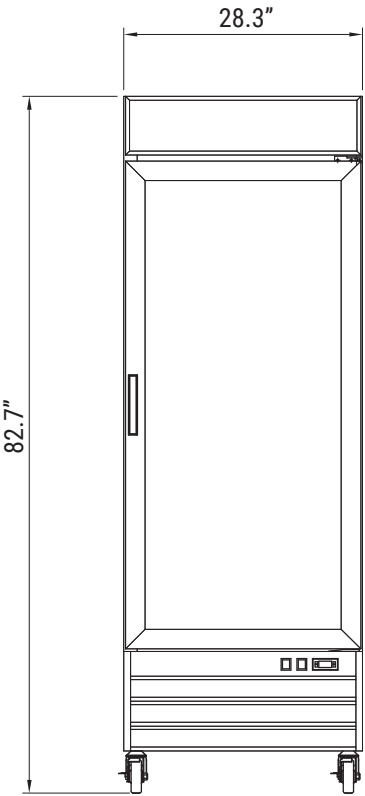
## Features & Material

Door Style	Swing
Number Of Doors	1
Number Of Shelves	4
Defrost Type	Automatic
Refrigerant Type	R-290
Temperature Control Type	External Digital
Ambient Temperature Range	90 F
Temperature Range	33-40 F
Casters	4
Light Type	LED
Shelf Material Type	Epoxy Coated
Interior Material	Coated Aluminum
Exterior Material	Painted Steel

## Electric Data & Certifications

Amps	3
Phase	1
Plug Type	NEMA 5-15P
Voltage	115
Certifications	ETL Listed for Safety and Sanitation

# Plan View



**CERTIFICATIONS**

Two Intertek certification logos are displayed. The first is the ETL C-Listed US logo, and the second is the ETL Certification Limited logo.



706 Eastern Parkway STE 1G, Brooklyn NY 11213  
718-576-6342  
info@koolmore.com