



SPEC SHEET

KoolMore 45 in. One compartment Stainless Steel Commercial Sink with Drainboards and Faucet, Bowl Size 15"x 15"x 12"

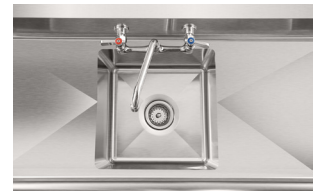
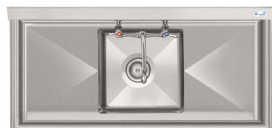
Model: SA151512-15B3FA

FEATURES

- Made of high-grade heavy-duty 304 corrosion-resistant stainless steel
- Adjustable 1 1/2 bullet feet for the best possible stability
- Two 15-inch drainboards
- Strong and sleek for the commercial Faucet included.
- Protective backsplash to prevent splashes
- Slanted drainboard surface to drain excess water
- Stainless steel leg sockets
- Corrosion-resistant galvanized steel legs
- Stainless steel drain basket included
- NSF certified
- 90-Day Warranty



CLOSE UP IMAGES



TECHNICAL SPECS

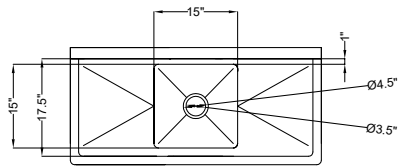
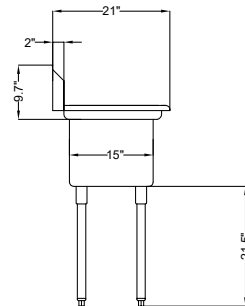
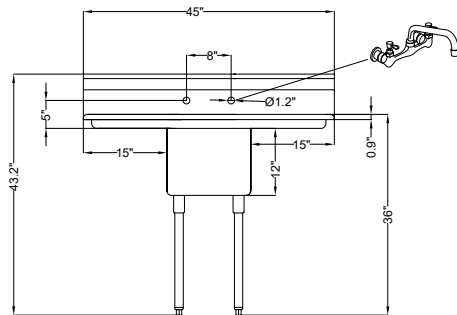
Dimensions

Length	45
Width	21
Height	43.2
Weight (lbs)	39.7
DxWxH of Bowl 1	15x15x12
Space Between Basins	NA
Height From Floor to Bottom of Basin	23.5
Height From Floor to Top of Basin	33.5
Assembled Height	28.5
Legs Height	20.16
Left Drainboard Length	15
Right Drainboard Length	15
Faucet Length	8
Faucet Height	5.1
Faucet Diameter	0.75
Backsplash Size	9.7

Features & Materials

Exterior Material	Stainless-Steel 304
Color Finish	Stainless-Steel
Drain Included	Yes
Number of Basins	1
Angle of Downward Incline in Basin	2 Degrees
Angle of Downward Incline of Dashboard	6 Degrees
Legs Adjustable	Yes
Feet Material	Plastic, Bullet
Gauge of Stainless Steel	18
Faucet Material	Copper & Zinc Alloy
Certifications	NSF

Plan View



CERTIFICATIONS



706 Eastern Parkway STE 1G, Brooklyn NY 11213
718-576-6342
info@koolmore.com