



SPEC SHEET

KoolMore 25 in. Commercial Bottle Cooler in Black with Built-In Opener, ETL Listed, 5 cu. ft.

SKU: KM-BOC25-BK

FEATURES

- Sleek Black Finish
- Convenient Rolling Caster Wheels
- Generous Overall Capacity: 4.9 cu. ft.
- Hassle-Free Automatic Defrost
- Voltage: 115V
- Temperature Range: 33-40°F
- ETL Listed for Safety and Sanitation Compliance



CLOSE UP IMAGES



TECHNICAL SPECS

Dimensions

Depth	26.4
Width	28
Height	34.2
Interior Depth	23
Interior Width	22
Interior Height	15.7
Shelf Width	N/A
Shelf Depth	N/A
Depth Including Handles	28
Depth Excluding Handles	28
Depth Less Door	28
Depth With Door Open 90 Degrees	28
Power Cord Length	98.4

Capacity

Weight	128
Gross Cubic Feet	4.9
Net Capacity Cu. Ft.	4.1
Number of 12 oz. bottles	63
Number of 12 oz. cans	112

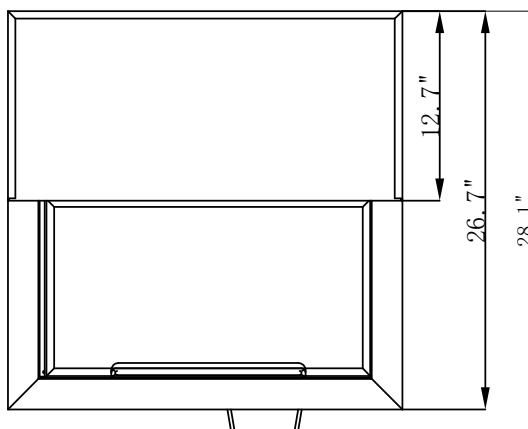
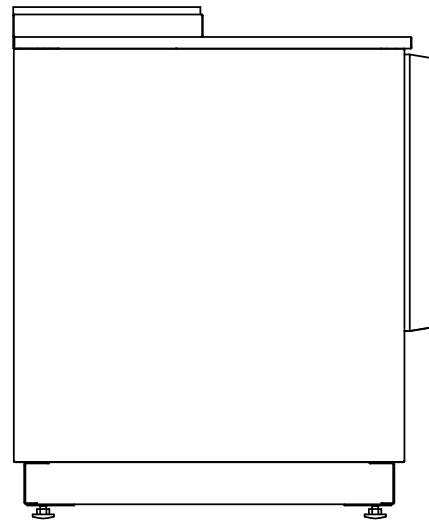
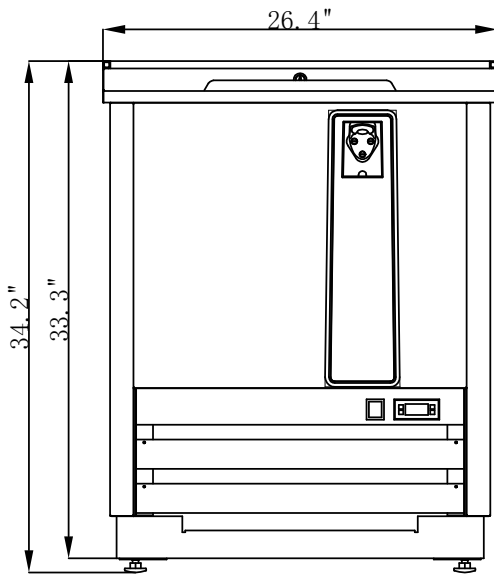
Features & Material

Door Style	SLIDING
Number Of Drawers	1
Number Of Shelves	0
Defrost Type	Automatic
Refrigerant Type	R290
Temperature Control Type	Digital
Ambient Temperature Range	90 F
Temperature Range	33-40 F
Casters	4
Top Thickness	NA
Shelf Material Type	Plastic Coated
Interior Material	aluminum
Exterior Material	painted steel

Electric Data & Certifications

Amps	2.04
Phase	1
Plug Type	NEMA 5-15P
Voltage	115
Hertz	60
Wattage	240
Horsepower	0.3
Certifications	ETL Listed for Safety and Sanitation

Plan View



CERTIFICATIONS



706 Eastern Parkway STE 1G, Brooklyn NY 11213
718-576-6342
info@koolmore.com