



SPEC SHEET

KoolMore 72 in. 16-Gauge Commercial Sink with Backsplash and Dual 18 in. Drainboards, Bowl Dimensions 18"x18"x14" in Stainless-Steel

Model: KM-SB181814-18B316

FEATURES

- **Durable 304 Steel:** 18-gauge stainless steel ensures rust resistance, easy maintenance, and long-lasting use in busy kitchens.
- **Dual Bowls for Multitasking:** Two 18x18x14 bowls enable simultaneous prep, rinse, and wash, boosting efficiency during peak hours.
- **Convenient Drainboards:** Includes two 18-inch drainboards and adjustable feet for efficient drainage and stable support.
- **Certified Hygiene:** NSF-certified, seamless, corrosion-resistant, and eco-friendly for a safe, clean workspace.
- **Space-Saving Design:** Wall-mounted option and ergonomic layout maximize comfort and kitchen space.
- **Versatile Capacity:** Large bowls handle diverse tasks, ensuring flexibility for any commercial kitchen need.



CLOSE UP IMAGES



TECHNICAL SPECS

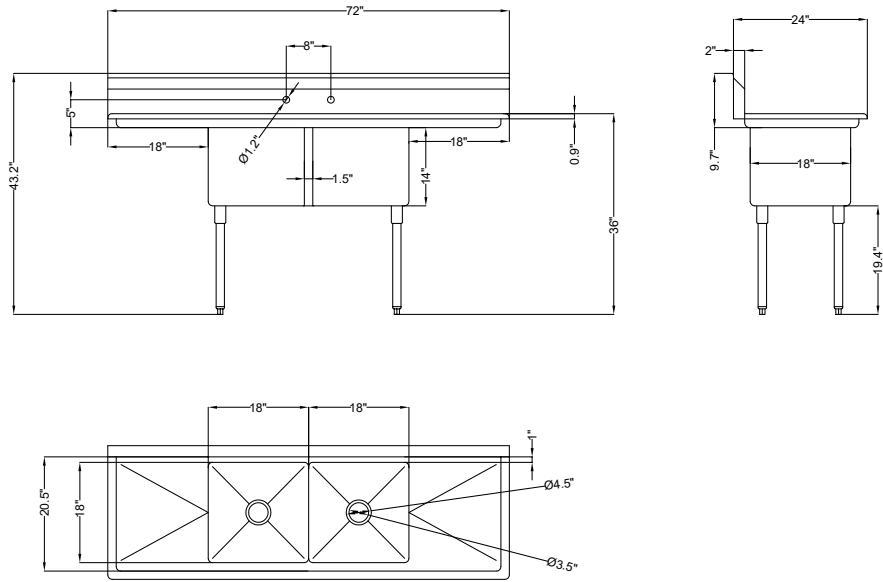
Dimensions

Length	72
Width	24
Height	43.2
Weight Lbs	77.14
DxWxH of bowl 1	18"x 18"x 14"
DxWxH of bowl 2	18"x 18"x 14"
DxWxH of bowl 3	NA
Height From Floor To Bottom Of Basin	19.44
Height From Floor To Top Of Basin	33.5
Legs Height	19.4
L Drainboard Length	18
R Drainboard Length	18
Backsplash Size	9.7

Features & Materials

Exterior Material	304 Stainless-Steel
Color Finish	Stainless-Steel
Drain Included	Yes
Number Of Basins	2
Angle Of Downward Incline In Basin	2 Degrees
Angle Of Downward Incline Of Dashboard	6 Degrees
Legs Adjustable	1 in.
Feet Material	Plastic bullet feet
Gauge Of Stainless Steel	18
Certifications	NSF Certified for Sanitation

Plan View



706 Eastern Parkway STE 1G, Brooklyn NY 11213
718-576-6342
info@koolmore.com