



SPEC SHEET

Five-Shelf Commercial Take Out Warmer Cabinet with Touch Screen in Stainless-Steel, UL and NSF Listed

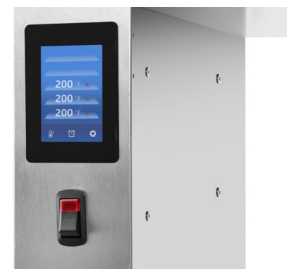
Model: KM-WSC-T5

FEATURES

- **Marine Edge Protection:** Prevents food slip-page and reduces spills.
- **Optimized for Take-Out and Delivery:** Specifically created for carry-out and delivery applications.
- **Independent Temperature Control:** Each shelf is controlled independently, allowing you to customize the temperature settings to suit different types of food.
- **User-Friendly Touchscreen Control:** Easy-to-use digital touchscreen for precise temperature management.
- **Durable Stainless-Steel Construction:** Made from high-quality 18-gauge stainless steel for durability and easy cleaning.
- **High Shelf Capacity:** Each shelf holds up to 55 lbs. of food.
- **Quadruple Shelf Design:** This warming unit features five shelves and provides ample space to keep multiple dishes warm simultaneously.
- **Adjustable Legs:** Ensures stability and fits into various kitchen layouts.
- **Freestanding Design:** Can be placed anywhere in the kitchen for flexible use.
- **UL and NSF Certified:** Meets high safety and sanitation standards.
- **1-Year Manufacturer's Warranty:** Covers parts and labor for 1 year.



CLOSE UP IMAGES



Technical Specs

Dimensions & Weight

Length	43 in.
Width	20 in.
Height	64.25 in.
Weight	225 lbs
Shelf Depth	20 in.
Shelf Width	39 in.
Height Between Shelves	13 in.

Electric & Certifications

Certifications	UL listed for safety and NSF for Sanitation
Wattage	1750
Voltage	120
Hertz	60
Phase	1
Amps	20
Plug Type	NEMA 5-15P
Power Cord Length	70.9 in.
Energy Consumption (kWh/year)	2800 kWh/year

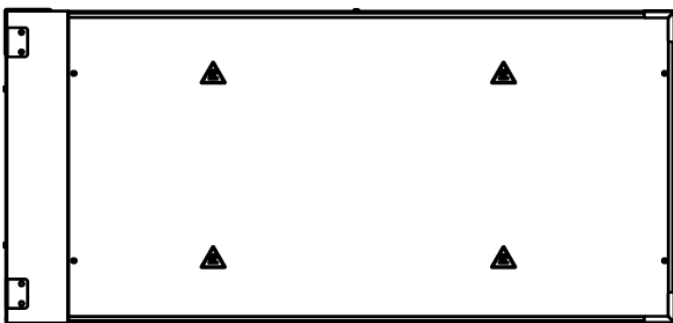
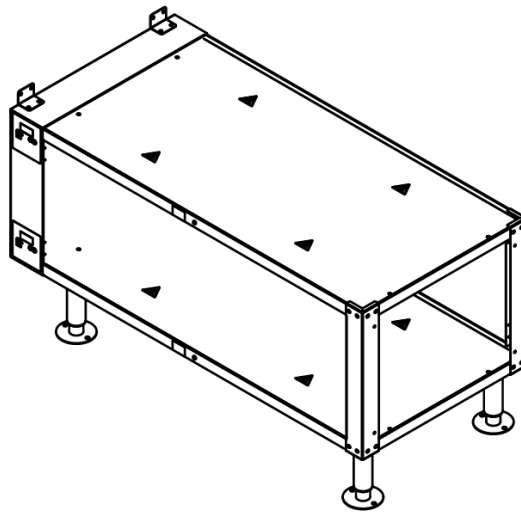
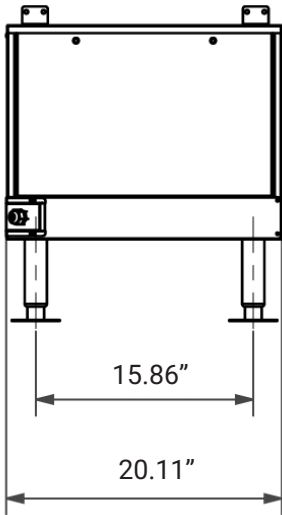
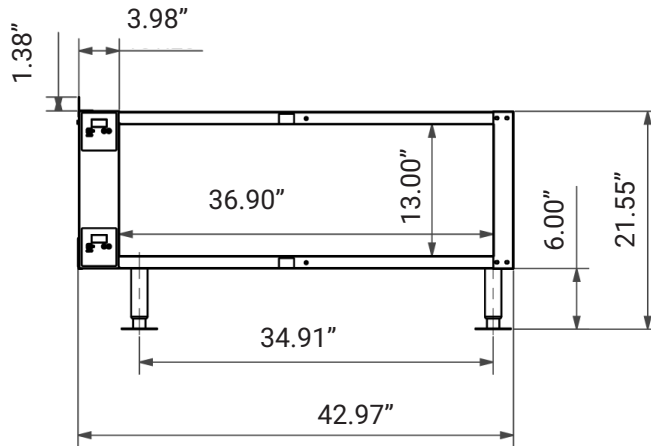
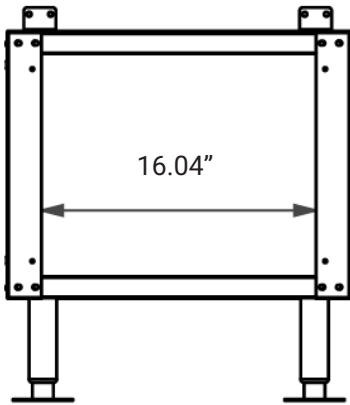
Capacity

Temperature Range	80–200°F
Individual Shelf Capacity	55 lbs
Number of Shelves	5
Number Of Warming Sections	4
Commercial / Residential	Commercial
Installation Type	Freestanding

Features & Materials

Number of Shelves	5
Number of Warming Sections	5
Control Type	Touchscreen
Legs Adjustable	Yes
Color	Stainless-Steel
Color Finish	Stainless-Steel
Exterior Material	Stainless-Steel 430
Gauge of Stainless Steel	18

Plan View



CERTIFICATIONS



718-576-6342
info@koolmore.com